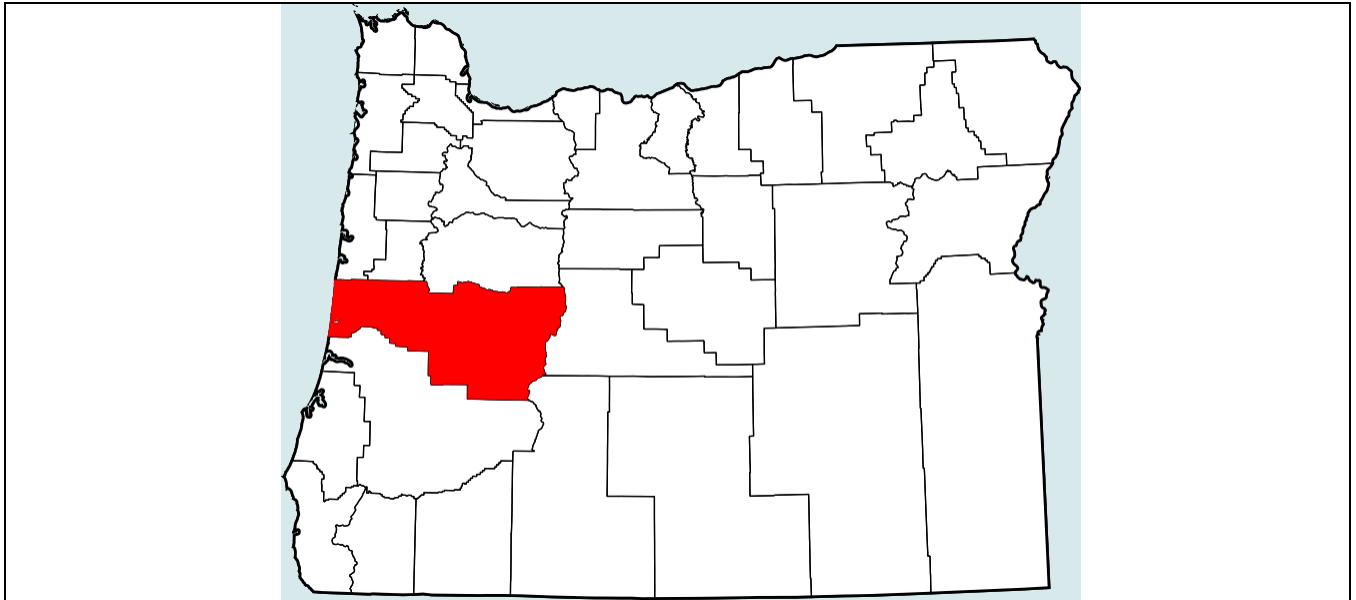


Lane County Assessor Map Information and Index



Contents:

Cartography Map Information	2
Map Numbering System	3
Township, Range, Section	4
East Range Numbering	4
Public Land Survey Subdivision and Measurement	5
Map Keys	6
Index to Cities and Locales	7

Cartography Map Information

Cartography manages a collection of approximately 3600 assessor maps. These have gone through several transitions as cartographic technology changes. Currently we are converting the Computer Aided Drafting (CAD) format to Geographic Information System (GIS) format. The GIS format is consistent with a state wide "ORMAP" effort to normalize all county assessor map data. As we are in transition, you will see both types of maps in our collection. The CAD maps often have hand written text on them and may include "CAD" in the upper right hand corner. The GIS maps have a gray shaded area outside of the tax lotted area and will include "GIS Data" in the upper right hand corner.

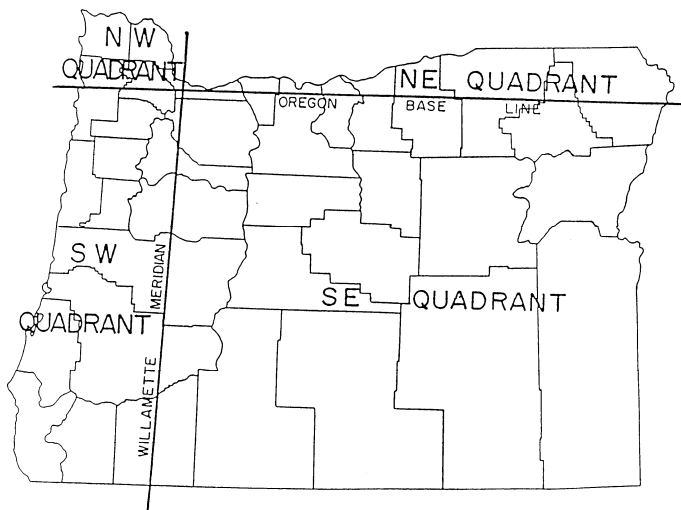
For more information see:

<http://www.lanecounty.org/Departments/AssessmentandTaxation/Pages/Cartography.aspx>

The Lane County map numbering system is based on the Public Land Survey System.

http://www.oregonencyclopedia.org/entry/view/oregon_land_survey_1851_1855/

The principle of this system is the division of the State of Oregon into a six mile grid of Townships and Range lines in the four quadrants defined by the Willamette Meridian and the Oregon Base Line. The resulting thirty-six square mile Townships are further subdivided into thirty-six Sections and subsequent Quarter Sections. The map title refers to a specific location within this system.

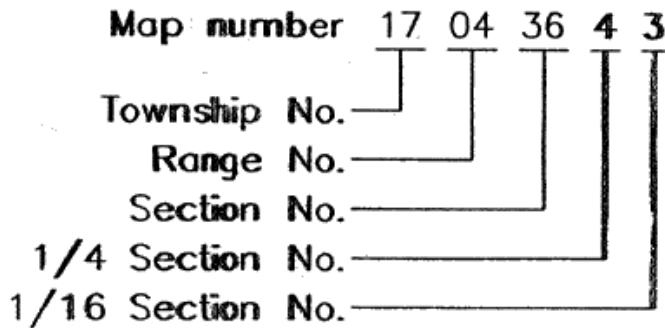
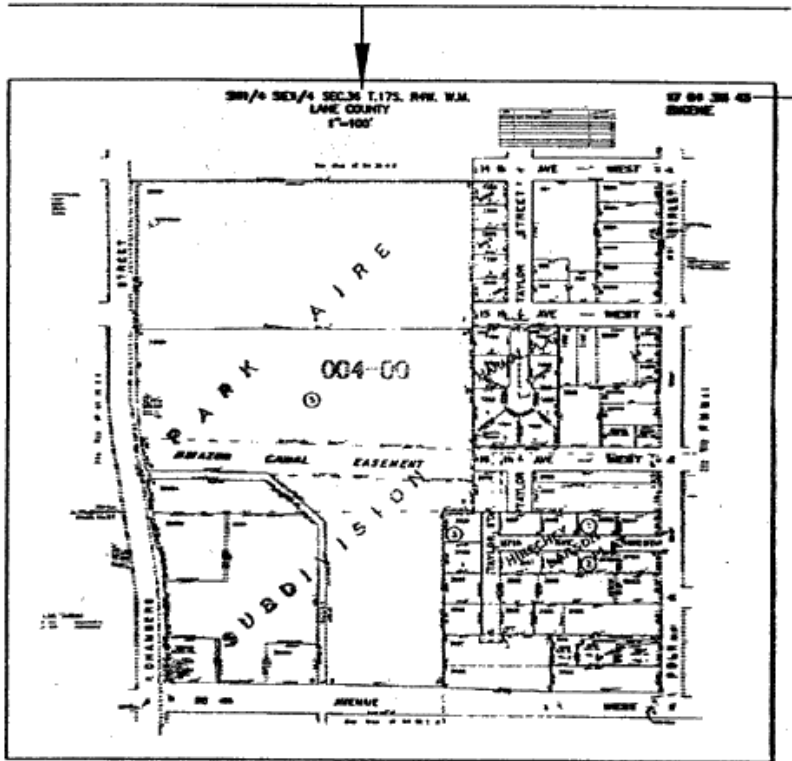


Map Numbering System

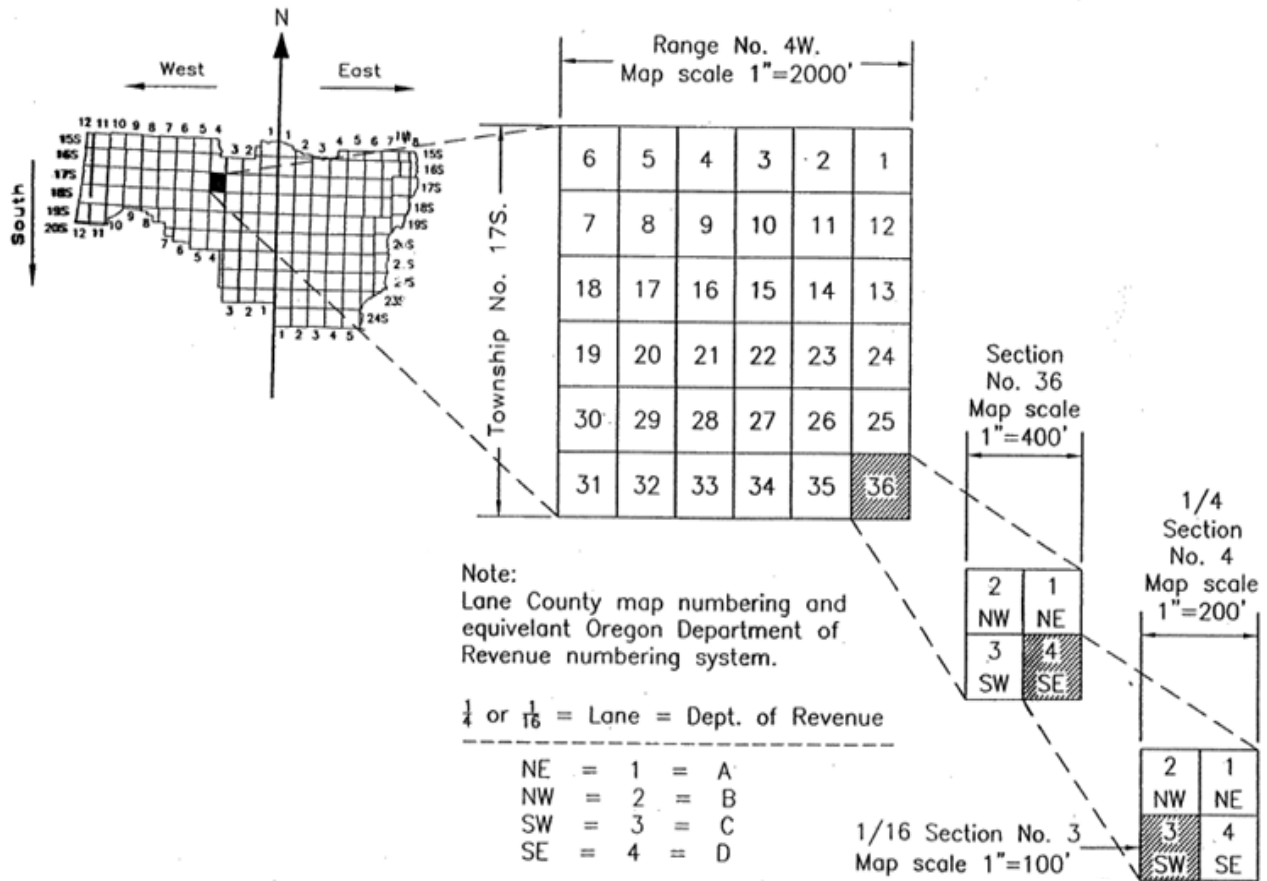
Lane County Tax Assessors Map Numbering System

Map header reads as...

SW1/4 SE1/4 SEC.36 T.17S. R4W. W.M.



Township, Range, Section



East Range Numbering

Lane County map numbering in determining East and West ranges.

West ranges are 2 digit numbers.
ie: 01, 02, 12, 13 etc.

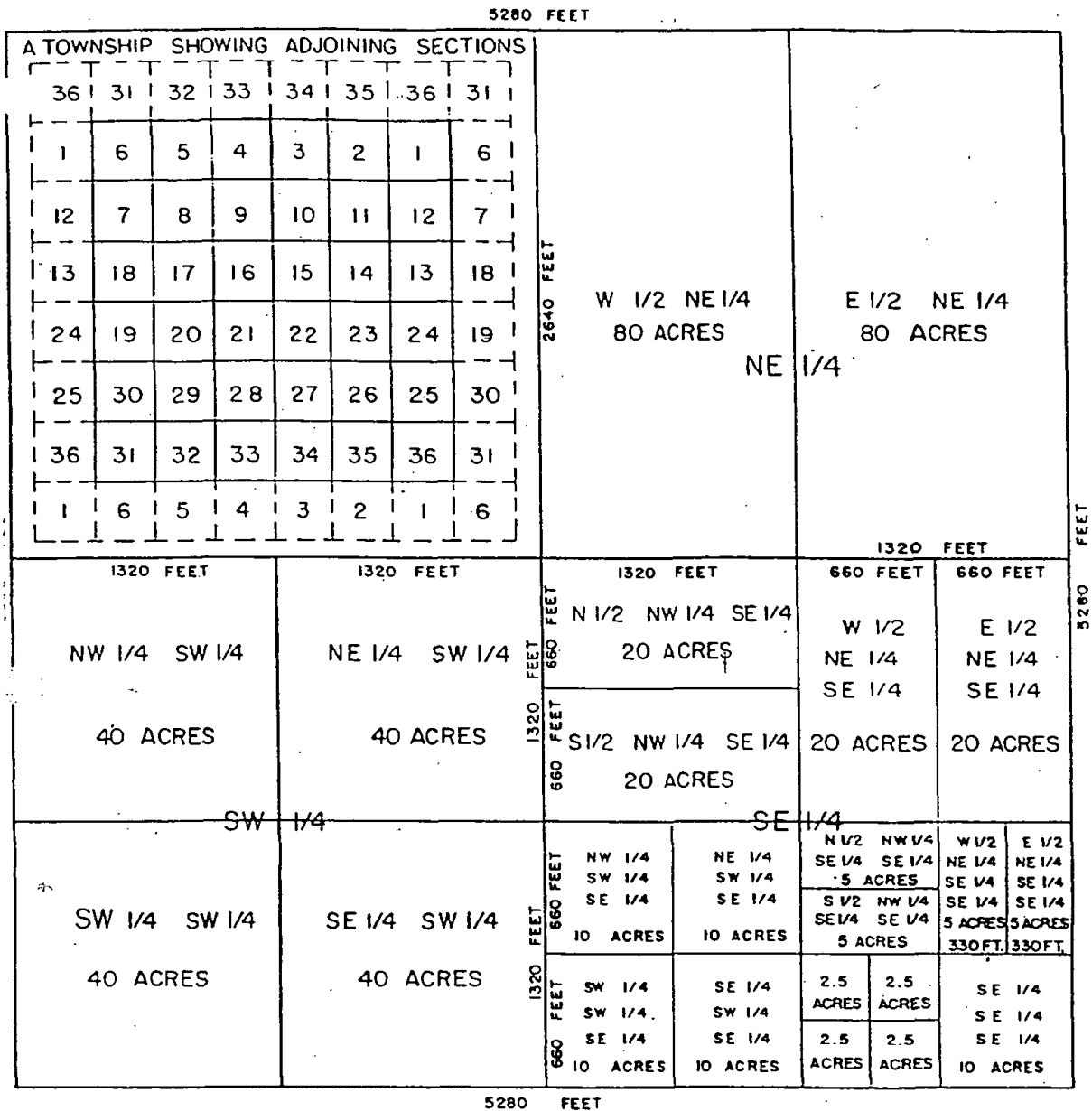
East ranges are designated with the number "5" in the range number.

Example:

- 15 = 1E.
- 25 = 2E.
- 35 = 3E.

Public Land Survey Subdivision and Measurement

DETAIL OF A SECTION OF LAND



LENGTH

1 LINK = 7.92 INCHES
 1 CHAIN = 66 FEET = 100 LINKS
 1 ROD = 16.5 FEET = 25 LINKS
 1 MILE = 5280 FT. = 80 CHAINS

AREA

1 ACRE = 43,560 SQ. FT.
 1 SEC. = 640 AC. = 1 SQ. MILE
 1 TOWNSHIP = 36 SECTIONS
 1 SQ. ACRE = 208,710 FEET SQ.

Index to Cities and Locales

INDEX TO MAP BOOKS BY CITY/LOCALE		
<p>Alvadore 160534 160535 170502 170503</p> <p>Blachly 160709</p> <p>Blue River 164520 164521 164528 164529</p> <p>Cheshire 160510 160515</p> <p>Coburg 160328 160329 160332 160333 170304</p> <p>Cottage Grove 200321 200322 200326 200327 200328 200329 200332 200333 200334 200335 210304 210305</p>	<p>Creswell 190310 190311 190312 190313 190314 190315 190323</p> <p>Crow 180518 180519</p> <p>Culp Creek 210130 210131 210132 210133 220105</p> <p>Cushman 181130</p> <p>Deadwood 170913 170914 170915 170916</p> <p>Dexter 190115 190116 190117 190120 190121</p> <p>Dorena 210130</p>	<p>Dune City 191200 191211 191213 191214 191215 191222 191223 191224 191226 191227 191234 201200 201203</p> <p>Elmira 170624 170625</p> <p>Eugene 160432 160433 160435 160436 170306 170307 170308 170309 170315 170316 170317 170318 170319 170320 170321 170322 170327 170328 170329 170330 170331 170332 170333 170401 170402 170403 170404</p>

Eugene (cont'd)	Eugene (cont'd)	Greenleaf
170405	180410	170804
170408	180411	170809
170409	180412	
170410	180413	Jasper
170411		180214
170412	Fall Creek	180223
170413	180133	
170414		Junction City
170415	Florence	150429
170416	171200	150430
170417	171233	150431
170418	181200	150432
170419	181203	150536
170420	181204	160405
170421	181209	160406
170422	181210	160408
170423	181211	160417
170424	181214	160420
170425	181215	160421
170426	181216	
170427	181222	Lancaster
170428	181223	150420
170429	181224	
170430	181226	Leaburg
170431	181227	171509
170432	181234	171510
170433	181235	
170434		Lorane
170435	Franklin	200512
170436	160521	200513
180303	160528	
180304		Lowell
180305	Glenada	190110
180306	181234	190111
180307	181235	190113
180308	191202	190114
180309	191203	190115
180310	191210	
180316	191211	Mapleton
180317		171035
180318	Goshen	181002
180319	180314	181011
180320	180323	
180321	180324	Marcola
180401	180325	160118
180402	180326	160119
180403		160213
180404		160224
180405		
180409		

<p>McKenzie Bridge</p> <p>165513 165514 165523 166518</p> <p>Nimrod</p> <p>173502 173503 173510 173511</p> <p>Noti</p> <p>170629 170630</p> <p>Oakridge</p> <p>213500 213509 213510 213515 213516 213517 213518 213521 213522</p> <p>Pleasant Hill</p> <p>180228 180229 180233</p>	<p>Springfield</p> <p>170219 170220 170227 170228 170229 170230 170231 170232 170233 170234 170235 170236 170314 170315 170316 170322 170323 170324 170325 170326 170327 170328 170333 170334 170335 170336 180201 180202 180203 180204 180205 180206 180215 180301 180302 180303 180304 180310 180311 180312</p>	<p>Swisshome</p> <p>170929 170930</p> <p>Trent</p> <p>190201</p> <p>Triangle Lake</p> <p>160717 160718 160719 160720</p> <p>Veneta</p> <p>170530 170531 170532 170625 170635 170636 180506 180601 180602</p> <p>Vida</p> <p>162528 162529 162532</p> <p>Walterville</p> <p>170122 170127 170128</p> <p>Walton</p> <p>180706</p> <p>Westfir</p> <p>212512 213507 213508</p>
---	--	--