



LANE COUNTY PARKS

Designing the Future
Together

WELCOME

THANK YOU FOR PARTICIPATING



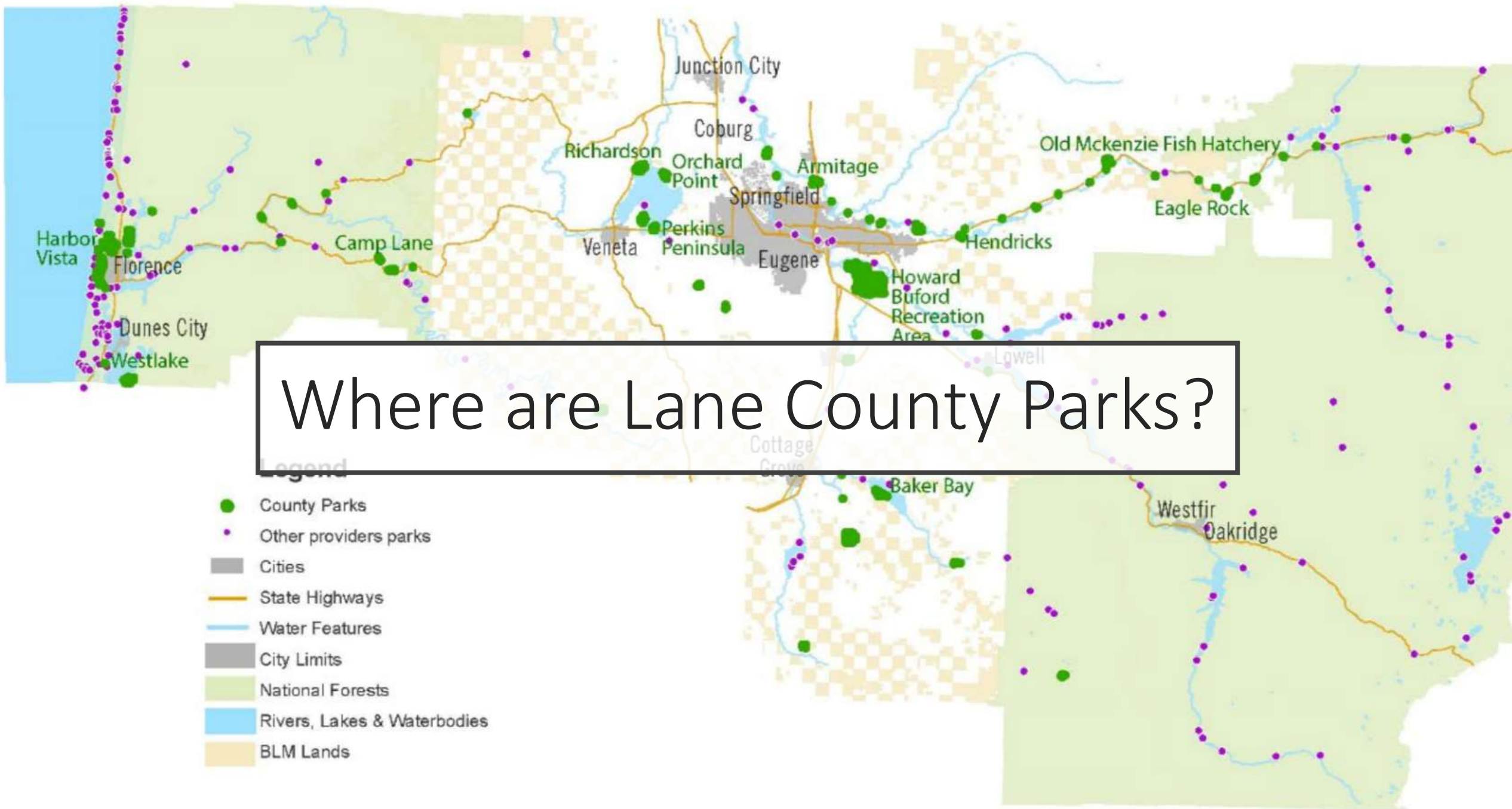
Introductions

- Name
- Affiliation
- Motivation



Where are Lane County Parks?

- Legend**
- County Parks
 - Other providers parks
 - Cities
 - State Highways
 - Water Features
 - City Limits
 - National Forests
 - Rivers, Lakes & Waterbodies
 - BLM Lands



How Did We Get Here?



Master Plan Priorities

Make Significant Investments in Targeted Parks

- Distribution and equity of recreation options
- Respect unique character and assets of each park
- Build on sites with existing access & infrastructure
- Opportunity to improve recreation experiences

Parks Budget

A Historical Perspective





1950's – 1970's: Growth of Lane County Parks

- Growth of Lane County Parks
- Period of park acquisition & development
- Timber Revenue, General Fund, Gas Tax, Grants, Small amount of User Fees
- Middle of 1970's over 35 full-time employees

Early 1980's: Decline of Lane County Parks

- More facilities than could adequately maintain
- No stable source for maintenance and operation
- 1982 Economic recession led to closing of parks



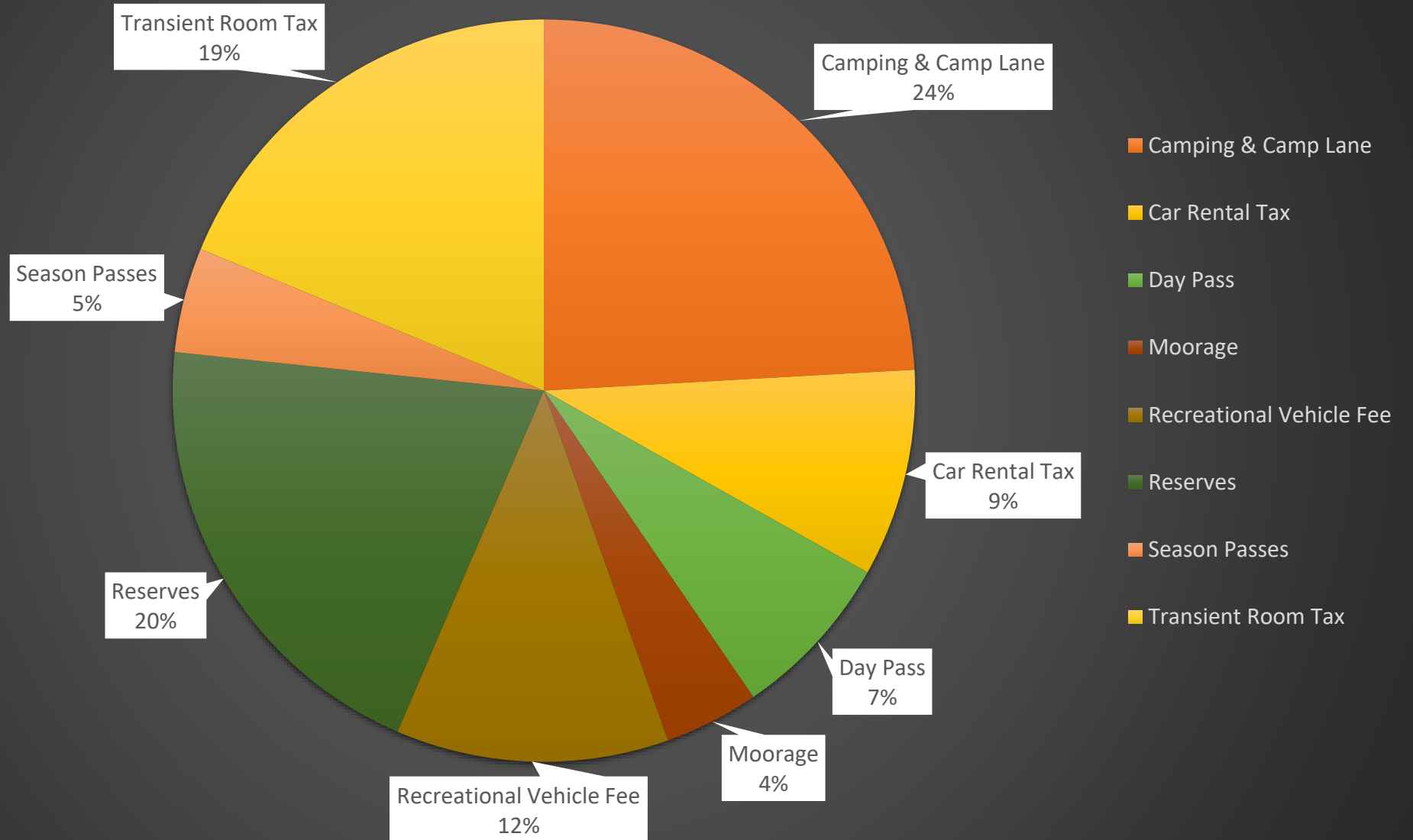


1983-2000: New Funding Strategy

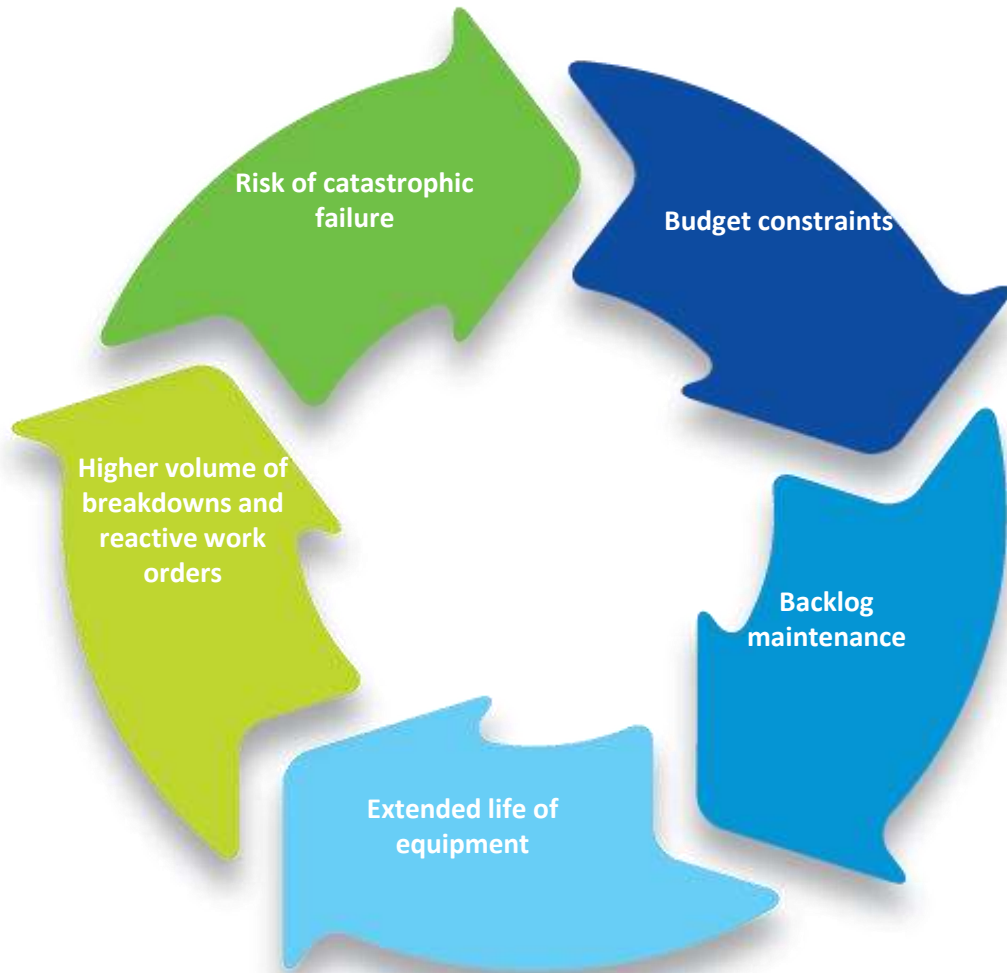
- Car Rental Tax (45% of operation budget by 2000)
- 1985 - County Hired full-time Parks Manager
- Eliminated reliance on General Fund & increased user fees
- 1999 - 59 Parks with 17 full-time employees



How are Lane County Parks Funded?



Deferred Maintenance



What is Deferred Maintenance?



Why is it so Costly?



Deferred Maintenance Backlog

Cost to Sustainably Operate

Budget Source	Current	Sustainable
FTE	18.8	29.8
Personnel Costs	\$1,995,517	\$3,000,000
Operating Costs (without Personnel)	\$1,623,827	\$2,800,000
Total Expenses (with Personnel)	\$3,619,344	\$5,800,000
Total Non-Tax Revenue	\$2,946,190	\$3,000,000
Net Tax Support	\$915,126	\$0
Net Funding Goal	N/A	\$2,800,000

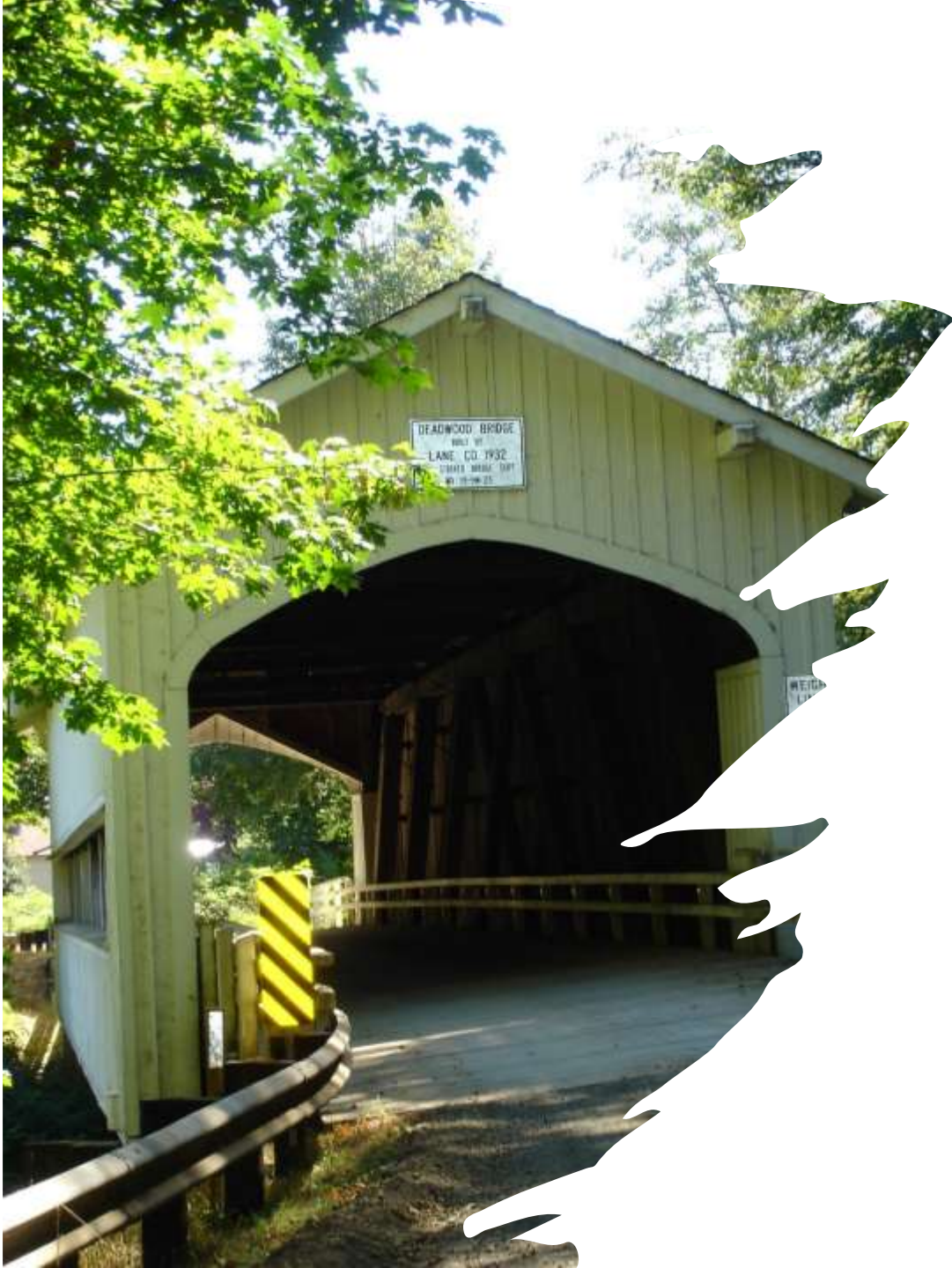


Funding Task Force Priorities

1. Long-term sustainable funding for park maintenance and operation.
2. Address the multi-million-dollar backlog of deferred maintenance.
3. Enhance the County's ability to pursue and implement conservation and habitat restoration projects.
4. Provide environmental and cultural education programs for youth and adults.
5. Focus on projects that generate net revenue.

Strategy for Sustainable Funding

Package	Annual Yield	Efficiency	Equity	Neutrality	Assessment
Package A: Local Option Levy	\$7.5 million ✓	Best ✓	Best ✓	Adequate	Recommended option.
Package B: New taxes and fee increases	\$6 million	Adequate	Worst ●	Worst ●	Option of last resort.
Package C: Combined levy & fee strategy	\$6 million	Adequate	Adequate	Adequate	Potentially effective compromise.



Preferred Funding Alternative

\$6 Million, Five-Year Local Option Levy to support park improvements SPECIAL PROJECTS, operations and routine maintenance, deferred maintenance, conservation & education

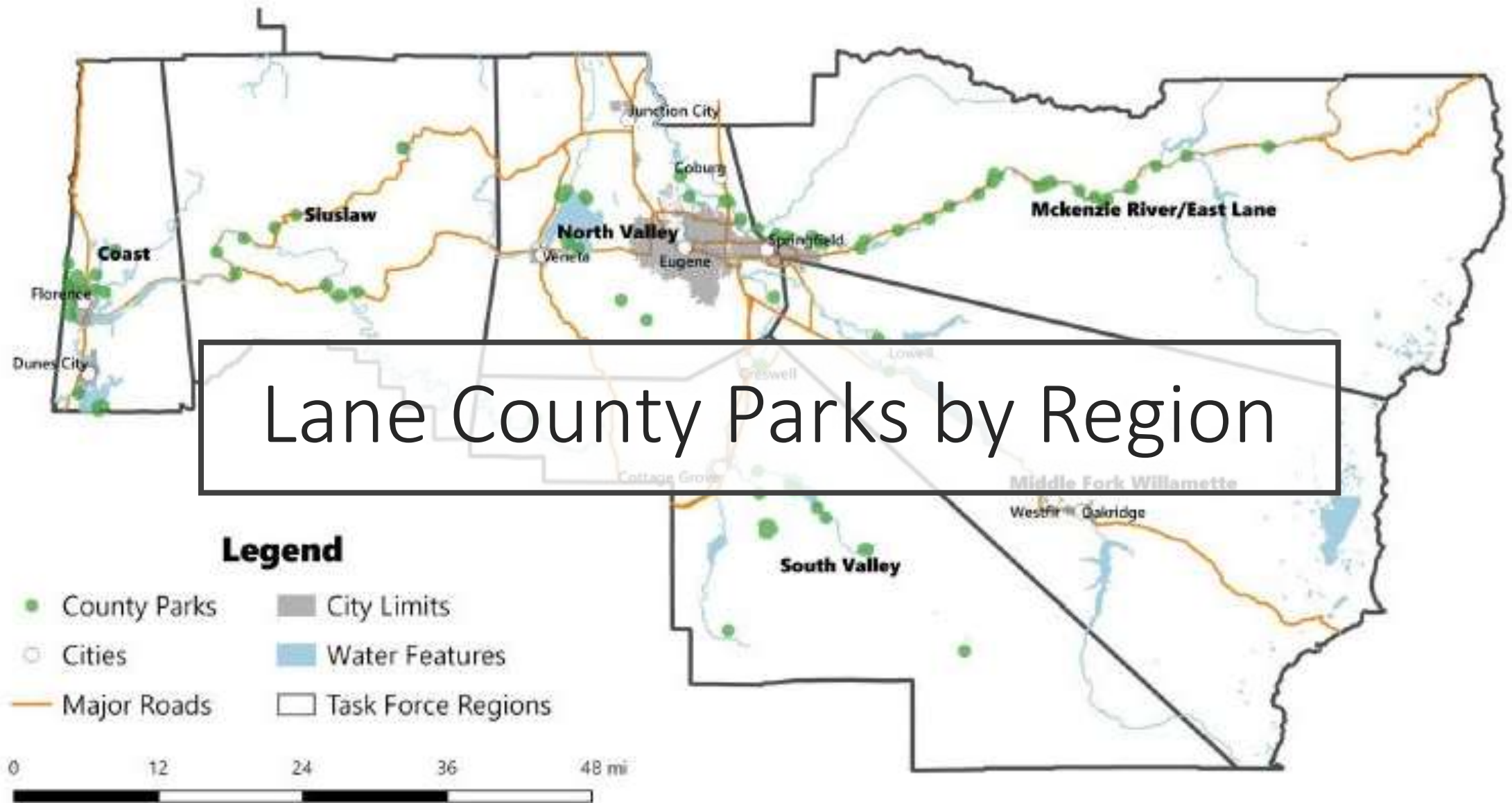
- \$1.5 Million from General Fund, Car Rental & Hotel Tax
- \$7.5 Million Generated Annually
- Property Tax Rate = .1657/\$1000 assessed value
- \$231,000 assessed home = \$38.00/year



Questions



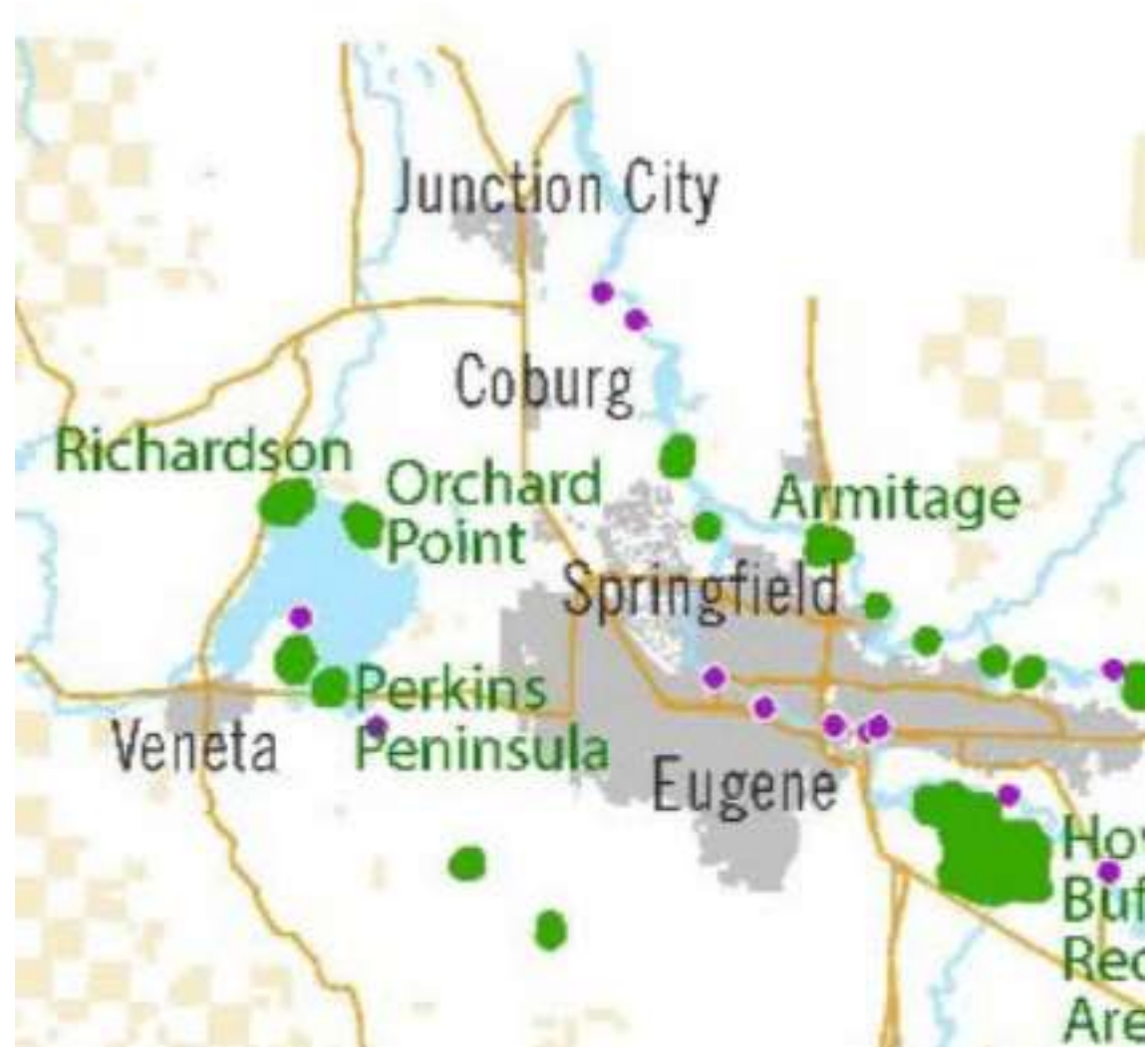
LANE COUNTY PARKS BY REGION



Source: 2016 Lane County GIS data.

Eugene/Springfield Region County Parks

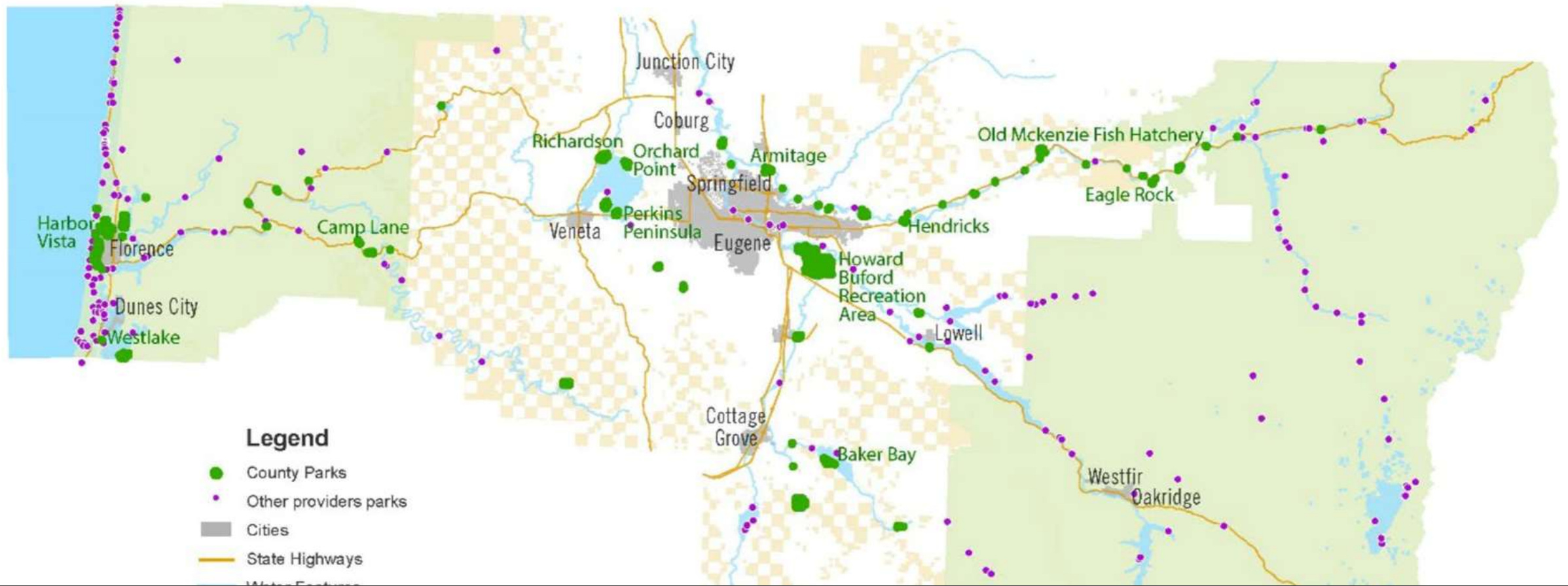
- Armitage Park
- Howard Buford Recreation Area
- Orchard Point Marina
- Perkins Peninsula
- Richardson
- Zumwalt





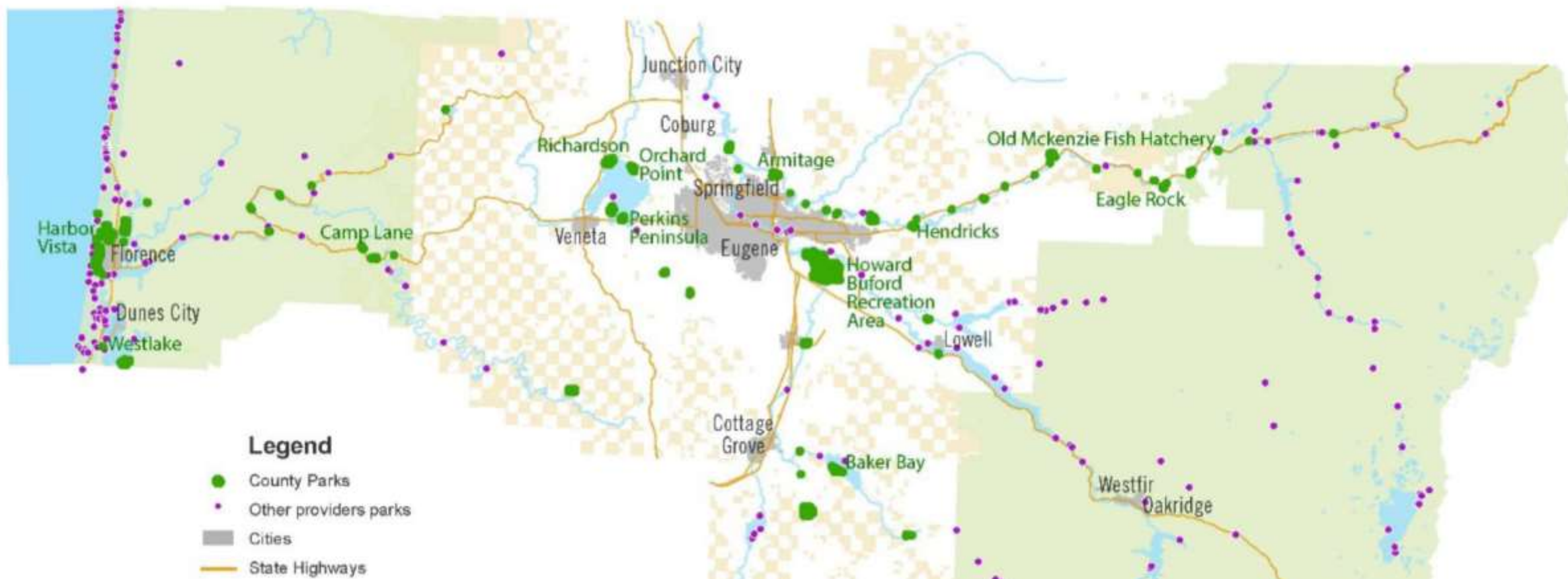
Florence Coast Region County Parks

- Harbor Vista Campground
- Camp Lane



McKenzie River Region County Parks

- Armitage Park
- Hendricks Bridge
- Forest Glen
- Helfrich Landing
- Leaburg Landing
- Boat Ramps



South Valley / Middle Fork

Baker Bay
Big River
Blue Mountain
Bohemia Saddle
Currin Covered Bridge

Dorena Covered Bridge
LaSells Stewart
Stewart Covered Bridge
Vaughn
Wildwood Falls

Levy – Funding Categories



Special Projects

Increased accessibility for people of all abilities

Revenue Generation

- Campgrounds, yurts/cabins
- Day-use facilities; marinas, picnic areas
- Boating facilities (motorized and non-motorized)

Recreation / Cooperative Projects

- Hiking – regional trail system
- Swimming and fishing Areas
- Interpretive facilities
- Disc golf, pickleball



Existing Features in Targeted Parks

Armitage Park



Campgrounds



Boat Ramp



Shelters



Picnic tables & BBQs



Dog Park



Interpretive and Educational Display

Howard Buford Recreation Area



Hiking



Interpretive and Educational Display



Festivals and Events



Equestrian Trails

Existing Projects in Targeted Parks

Orchard Point Marina



Playgrounds



Marina & Boat Ramp



Shelters



Volleyball nets



Picnic tables & BBQs

Perkins Peninsula



Playgrounds



Marina & Boat Ramp



Baseball



Volleyball nets



Picnic tables & BBQs

Existing Projects in Targeted Parks

Richardson



Campgrounds



Marina & Boat Ramp



Shelters



Picnic tables & BBQs

Zumwalt



Hiking Trails



Interpretive and Educational display



Festivals and Events



Picnic tables & BBQs

Existing Features in Targeted Parks

Harbor Vista Campground



Campgrounds



Playgrounds



Picnic tables & BBQs



Interpretive and Educational Display

North Jetty



World of Possibility

Existing Features in Targeted Parks

Forest Glen Landing

Greenwood Landing

Hayden Bridge



Boat Ramp



Restrooms

Helfrich Landing



Boat Ramp



Interpretive and Educational Display



Restrooms

Existing Features in Targeted Parks

Baker Bay Park



Campgrounds



Marina and Boat Ramp



Restrooms/Showers (ADA)



Picnic tables & BBQs



Trail



Playground



Swimming



Day use area

Existing Features in Targeted Parks

Dorena Covered Bridge – Wayside



Parking



Restrooms (non-ADA)

Parking ONLY

Currin and Stewart Covered Bridges

LaSelle

Blue Mountain

Wildwood Falls*



Picnic Area



Portable Restroom (non-ADA)



Swimming *

Big River, Bohemia Saddle, Vaughn – no services

Activity

What enhancements would improve accessibility?

Which recreational features are most desirable?

What educational elements will enhance the visitor experience?

Next Steps

June Public Opinion Survey

June 13, 2022 – Parks Advisory Committee

July, 2022 - Board of Commissioners Approval

Political Action Committee Formation

November 8, 2022 – Election Day

Reference Materials

[Lane County Strategic Plan](#)

[Lane County Parks Master Plan](#)

[Lane County Parks Funding Task
Force Report](#)

[History of Lane County Parks](#)



Thank You