

# CHAPTER \*\*

## LANE COUNTY PARK FACILITIES AND SERVICES

Lane County owns or maintains 73 parks that reflect the region's diverse natural landscape. Amenities include RV parks, marinas, large group picnic accommodations, and boating access to the area's numerous lakes and rivers. County parks also feature historic covered bridges, and a gold mine ghost town.

This chapter describes the current inventory of parklands that Lane County Parks Division owns, leases, or maintains. A more detailed inventory is in Appendix \*\*, sorted alphabetically, by service class, and by watershed.

It is important to note that as the Parks Division pursues priorities and seizes opportunities to improve the parks system, the inventory may change.

### Methodology

The last time county parklands were formally inventoried was in 1980. A comprehensive approach was taken to update the inventory acreage in order to ensure accurate baseline data. A review of source documents was completed including Assessor's data, deeds, land exchange documents, leases, and maintenance agreements. Technological advances since 1980 allowed computerized mapping that produced highly accurate parcel boundaries and acreage data. This occurred as part of a county-wide project that combined land surveys, high-resolution aerial photographs, and other data sources. All differences between the 1980 and recent data were identified, resolved, and described (see Appendix \*\*).

From 2004-2006, staff visited all parks on one or more occasions to inventory each park's facilities. Parks Division staff also provided detailed information about park services.

This methodology resulted in an inventory that has a high degree of accuracy.

### Ownerships

Lane County collaborates with several agencies to provide recreational resources. In addition to county-owned lands, four other agencies and one private entity own recreational lands that Lane County leases, or for which Lane County provides basic maintenance. Table \*\* shows ownerships, acreages, and number of parks represented in this chapter.

Table \*\*: County Owned, Leased, and Maintained Parklands By Ownership

	# of Parks	Acreage	% of Total Acres
Lane County	41.5	3,856.7	87.9
Bureau of Land Management	2	1.2	--
Eugene Water & Electric Board	6	25.1	.6
Oregon Dept. of Fish & Wildlife, and Oregon Parks & Recreation Dept.	11.5	98.5	2.2
U.S. Army Corps of Engineers	8	403.4	9.2
Private Land	4	3.1	.1
<i>Totals</i>	<i>73</i>	<i>4,388.0</i>	<i>100%</i>

## Park Types

The majority of County parklands are regional in nature, meaning they draw users from the entire county and beyond. Residents enjoy them on a regular basis and they occasionally attract visitors from other states and countries. Some county parks offer a specific resource, such as river boating access. As a comparison, neighborhood parks within cities cater to daily recreational needs of the residents within walking or biking distance. On the other end of the scale, state parks are on average larger and draw people from a wider geographic area on a more regular basis, while national parks are often several thousand acres in size and serve as vacation destinations.

## Park Service Levels

Lane County parks are classified as A, B, C, or D parks; with A being the highest level of service and D being no or minimal service. Level of service also indicates the extent to which a park is developed and amount of amenities offered. Service Class does not imply a level of superiority or inferiority of an outdoor experience. One park's unique natural values and remoteness may make it a special place to enjoy nature and solitude. Another may include sizeable lake frontage and be easily accessible from a metropolitan area, and therefore well-suited to serve demand for boating, swimming, and intensive day use. Following are service class descriptions used by Lane County Parks.

### CLASS A

This is the maximum level of service provided in Lane County parks. Parks in this class offer a wide range of recreational service, amenities, and opportunities. They exhibit high levels of capital investment and receive intense use. Maintenance and service emphasizes sanitation and safety, with restroom facilities receiving service one or more times per day. Landscaping is also a priority. All have full time caretakers, and visitors to these parks should rarely, if ever, encounter a situation that would make them feel insecure. Most contain facilities for large group events, including covered shelters with electricity, running water, and food serving areas available by reservation. Overnight facilities all have hot showers.

### CLASS B

Parks in this class provide recreational opportunities that are high quality, but limited in scope and number of possible activities, so they are not as intensively used as are Class A parks. They have a high level of cleanliness and sanitation and are maintained two to three times per week.

### CLASS C

This is the minimum level of service provided in Lane County's parks. Parks in this class tend to be small, minimally developed and single-purpose in nature. Improvements generally consist of a parking area and toilet facilities, and sometimes picnic tables. These parks receive regular maintenance.

### CLASS D

Class D parklands are undeveloped. Some have primitive trails but often there are no recreation facilities. Resource-based revenue generation occurs on some of these lands. Due to their remote location and lack of accessibility or services, these parks may receive infrequent use. However, they may offer outstanding passive recreation opportunities.

Table \*\* shows county parks by service class and percentage of acres in each service class. Landowners other than Lane County are shown in italics. (A list of acronyms and their meaning is in Appendix \*\*).

Table \*\*: County-Owned, Leased, or Maintained Parks in Each Service Class

Park	Acres	% of Total
<b>Class A</b>		
Armitage	63.9	
Baker Bay ( <i>USACE</i> )	80.4	
Camp Lane	15.6	
Harbor Vista	14.2	
Hendricks Bridge	17.8	
Orchard Point ( <i>USACE</i> )	57.7	
Perkins Peninsula ( <i>USACE</i> )	41.6	
Richardson ( <i>USACE</i> )	114.8	
<b>Total, Class A</b>	<b>406.0</b>	<b>9%</b>
<b>Class B</b>		
Bellinger Landing ( <i>ODFW</i> )	.6	
Ben & Kay Dorris ( <i>OPRD</i> )	86.0	
Bender Landing ( <i>ODFW</i> )	.5	
Deerhorn	6.5	
Forest Glen Landing ( <i>ODFW</i> )	1.9	
Greenwood Landing	.4	
Hamlin ( <i>ODFW</i> )	.2	
Heceta Beach	2.8	
Helfrich Landing	1.0	
Jennie B. Harris ( <i>OPRD</i> )	4.2	
Linslaw	26.9	
Lowell Cov. Brdge Interp. Cntr. ( <i>USACE easement</i> )	1.6	
Old McKenzie Hatchery	45.2	
Rodakowski Landing	.5	
Triangle Lake	.6	
Westlake ( <i>ODFW</i> )	1.3	
Whitely	1.4	
<b>Total, Class B</b>	<b>181.6</b>	<b>4%</b>
<b>Class C</b>		
Ada	99.9	
Austa Ramp ( <i>Roseburg Resources, ODFW leased</i> )	.5	
Blue Mountain	268.3	
Bohemia Saddle	12.4	
Currin Bridge	1.0	
Deadwood Landing ( <i>ODFW</i> )	0.5	
Dorena Bridge	1.1	
Eagle Rock	13.3	
EWEB Bike Path ( <i>EWEB easement</i> )	21.0	
Fall Creek	11.3	
Farnham ( <i>ODFW</i> )	.7	
Finn Rock ( <i>Rosboro</i> )	0.5	

Park	Acres	% of Total
Hayden Bridge ( <i>EWEB</i> )	3.0	
Howard Buford Rec. Area	2,216.3	
Howard J. Morton	14.9	
LaSells Stewart	14.0	
Leaburg Dam Boat Slide	.1	
Leaburg Lake (Ike's Landing) ( <i>EWEB</i> )	.1	
Leaburg Landing	.5	
Mapleton Landing ( <i>ODFW</i> )	1.8	
Mercer Lake ( <i>ODFW</i> )	1.0	
Munsel Lake	1.8	
Rennie's Landing	.1	
Rock Dock ( <i>USACE</i> )	.7	
Schindler	.3	
Silver Creek Landing	1.1	
Stewart Bridge	.1	
Tide	1.8	
Walterville Canal ( <i>EWEB easement</i> )	.7	
Wildwood Falls	3.4	
Winter Landing ( <i>EWEB</i> )	.2	
Zumwalt ( <i>USACE</i> )	58.0	
<b>Total, Class C</b>	<b>2,750.4</b>	<b>63%</b>
<b>Class D</b>		
Big River	38.8	
Cinderella	56.1	
Clear Lake Dunes	156.3	
Clover ( <i>Rosboro</i> )	1.8	
Deadmond's Ferry Landing	.1	
Hileman	45.4	
Kinney	18.5	
Myers	3.3	
Oakhurst	.5	
Ocean Woods	40.0	
Peaceful Valley	9.8	
Siuslaw Falls	78.9	
South Beach	299.8	
Three Mile Prairie	160.8	
Vaughn ( <i>USACE</i> )	48.6	
Vickery	91.3	
<b>Total, Class D</b>	<b>1,050.0</b>	<b>24%</b>
<b>Total, All Parks</b>	<b>4,388.0</b>	<b>100%</b>

Table \*\* below shows the number and acreage of county parks in each service class by watershed.

**Table \*\*: Number and Acreage of County Parks in Each Service Class By Watershed**

Watershed	Class A		Class B		Class C		Class D		Total	
	#	acres	#	acres	#	acres	#	Acres	#	Acres
Coast Fork	1	80.4			7	300.3	3	143.5	11	524.2
Long Tom	3	214.1			1	58.0	2	28.3	6	300.4
McKenzie	2	81.7	10	146.5	12	55.5	5	97.0	29	380.7
Middle Fork			1	1.6	2	2,227.6			3	2,229.2
Siltcoos			1	1.3	1	99.9			2	101.2
Siuslaw	2	29.8	4	30.8	9	9.1	5	735.8	20	805.5
Upper Willamette			1	1.4			1	45.4	2	46.8
<i>Totals</i>	<i>8</i>	<i>406.0</i>	<i>17</i>	<i>181.6</i>	<i>32</i>	<i>2,750.4</i>	<i>16</i>	<i>1,050.0</i>	<i>73</i>	<i>4,388.0</i>

## Developed And Undeveloped County Park Lands

In order to compare the degree to which county parks offer passive recreation opportunities versus service and amenity oriented recreation experiences, parks can be categorized according to whether they are primarily developed or undeveloped. Park users gravitate toward each for distinctly different experiences.

Table \*\* shows County owned and maintained parklands by watershed comparing the number of primarily developed or undeveloped acreage. Undeveloped parks in the table are those that are more than five acres in size, and may have parking areas, water access, and vault or portable toilets. Usually they lack any other type of facility. Developed parks in the table may have significant undeveloped acreages, but they include Class A facilities, are otherwise developed with structures, or, are less than five acres in size. (Appendix \*\* identifies how individual parks were categorized in this regard.)

**Table \*\*: Primarily Developed and Undeveloped Park Lands**

Watershed	Primarily Developed or ≤ 5 acres	Primarily Undeveloped
Coast Fork Willamette	96.6	427.6
Long Tom	172.5	127.9
McKenzie	184.3	196.4
Middle Fork Willamette	1.6	2,227.6
Siltcoos	1.3	99.9
Siuslaw	42.8	762.7
Upper Willamette	1.4	45.4
<i>Total Acres</i>	<i>500.5</i>	<i>3,887.5</i>
<i>Percent of Total</i>	<i>11%</i>	<i>89%</i>

## Existing Parks By Watershed

This section provides a description of the general character of park resources available by watershed and highlights some of the parklands that are owned, leased, or maintained by Lane County. It is organized by watershed, beginning in eastern Lane County with the McKenzie watershed, and ending at the coast in southern Lane County with the Siltcoos watershed. Detailed maps are in \*\*.

## MCKENZIE WATERSHED

McKenzie watershed parks are owned by Lane County, Bureau of Land Management (BLM), Eugene Water and Electric Board (EWEB), State Fish and Wildlife (ODFW), and the State Department of Transportation (ODOT). In addition, two sites are long time popular boat launches on private timberlands.

### McKenzie River Cooperative Maintenance Partnership

In 1996-1997, the McKenzie Watershed Council facilitated a cooperative planning effort, resulting in a Recreation Action Plan for the McKenzie River. To implement the plan, Lane County, BLM, EWEB, ODFW, and the Oregon Parks and Recreation Department (OPRD) work as partners under an intergovernmental agreement, the McKenzie River Cooperative Maintenance Partnership, to maintain parks along the river, provide for their stewardship, and reduce vandalism and theft. Lane County provides routine maintenance for most of the parks along the river, including cleaning restrooms, garbage disposal, and basic facilities maintenance. User groups and volunteers, in particular the McKenzie River Guides Association and the Friends of the Old McKenzie Fish Hatchery, are also involved in care and planning for these parks.



*Leaburg Landing*

Most of the 29 parks in this watershed are small, river access areas of less than an acre in size. Many also serve as wayside rest areas for motorists on the McKenzie Highway.

### Armitage

Armitage Park is owned by the County and is one of two Class A county parks on the McKenzie. Located in Lane County's Eugene-Springfield metropolitan area, it is a 64-acre oasis a few miles south of historic Coburg. Armitage offers visitors a full array of day use amenities including a paved boat ramp, ample trailer parking, volleyball and horseshoe pits, a dog park, and several large group picnic sites with electricity, cooking facilities, and drinking water. Its natural amenities include old growth deciduous and evergreen trees. A half-mile, self-guided interpretive trail constructed by the McKenzie Watershed Council winds through undeveloped portions of the park. Armitage is a favorite place to begin or end a boat trip, take a tranquil walk, and for large group picnic gatherings. Armitage also regularly serves as a staging area for emergency search and rescue training operations.

### Hendricks Bridge



Along with Armitage, 18-acre Hendricks Bridge in Waltherville provides Class A day use facilities. The park's proximity to the metropolitan area, full service picnic shelter, numerous individual picnic sites, game facilities and river access make it a popular day-use facility.

*Hendricks Bridge Picnic Shelter*

### Ben & Kay Dorris Park

Ben & Kay Dorris Park is approximately 86 acres in size. It is a forested tract that straddles the McKenzie Highway, east of the unincorporated community of Vida. The park includes several picnic table groupings, a boat ramp, and an asphalt nature path. This is a popular lunch stop for rafters headed further down river.

### Old McKenzie Trout Hatchery

Near Leaburg on the McKenzie Highway is the early 1900's-era McKenzie Trout Hatchery. The site is listed on the National Historic Register. Interpretive signs describe hatchery operations and its remaining artifacts. The park also serves as



*Old McKenzie Trout Hatchery*

the McKenzie Visitors Center. It has ample parking and is often used as a rest area by highway travelers.

Other McKenzie River Boat Landings

Besides Armitage, Hendricks Bridge, and Ben & Kay Dorris Parks, there are 18 boat landings along the McKenzie River, all owned or maintained by Lane County Parks.



Anglers at Winter Landing (left); ODFW wildlife interpretive sign at Silver Creek Landing (right).



Table \*\*: McKenzie Watershed Parks

Park	Acres	% of Total
<b>Class A Parks</b>		
Armitage	63.9	
Hendricks Bridge	17.8	
<b>Total, Class A</b>	<b>81.7</b>	<b>21%</b>
<b>Class B Parks</b>		
Bellinger Landing	0.6	
Ben & Kay Dorris	86.0	
Deerhorn	6.5	
Forest Glen Landing	1.9	
Greenwood Landing	0.4	
Hamlin	.2	
Helfrich Landing	1.0	
Jennie B. Harris	4.2	
Old McKenzie Hatchery	45.2	
Rodakowski Landing	0.5	
<b>Total, Class B</b>	<b>146.5</b>	<b>38%</b>
<b>Class C Parks</b>		
Eagle Rock	13.3	
EWEB Bike Path	21.0	
Finn Rock	0.5	

Park	Acres	% of Total
Hayden Bridge	3.0	
Howard J. Morton	14.9	
Leaburg Boat Slide	0.1	
Leaburg Lake	0.1	
Leaburg Landing	0.5	
Rennie's Landing	0.1	
Silver Creek Landing	1.1	
Walterville Canal	0.7	
Winter Landing	.2	
<b>Total, Class C</b>	<b>55.5</b>	<b>16%</b>
<b>Class D Parks</b>		
Clover	1.8	
Deadmond's Ferry	0.1	
Myers	3.3	
Oakhurst	.5	
Vickery	91.3	
<b>Total, Class D</b>	<b>97.0</b>	<b>25%</b>
<b>Total for Watershed</b>	<b>380.7</b>	<b>100%</b>

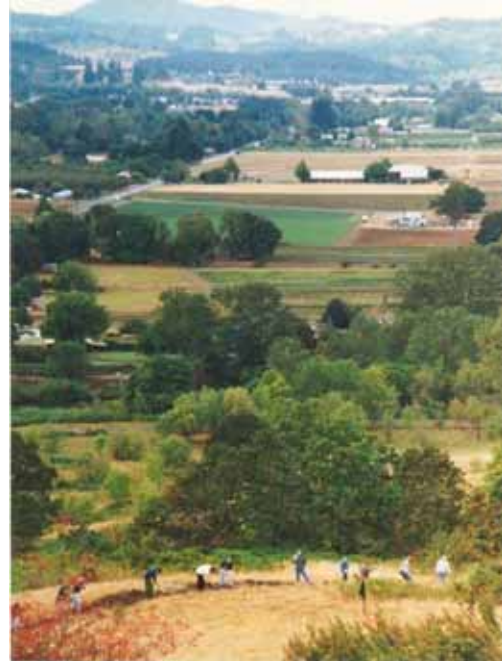
**MIDDLE FORK WILLAMETTE WATERSHED**

While there are only three county parks here, there are more county parklands in the Middle Fork than in any other watershed, due to the size of Howard Buford Recreation Area (HBRA). At 2,216 acres, it makes up approximately half the acreage in the County Parks system.

Howard Buford Recreation Area (HBRA)

Mt. Pisgah butte within the HBRA is visible for miles from several locations throughout the Eugene-Springfield area. HBRA's numerous assets make it a favorite local destination. In addition to the 118-acre arboretum within the park, it includes some of the last remaining, sizeable native oak savannah prairie in the county. The Seavey-Kienzle homestead farmhouse and barn is within the park boundaries. Approximately 16 miles of trails leads up and around the 1,518-foot high butte, offering 360-degree views of the surrounding valley and mountains. Some trails are open for equestrian use, and the park includes an outdoor horse arena.

The park was purchased by the state in 1972 at the urging of local residents, and conveyed to Lane County ten years later. The Mt. Pisgah Arboretum was established within the park shortly after the land became public. An active volunteer base, including the Mt. Pisgah Arboretum, the Friends of Buford Park, and the "Sheriff's Posse", an equestrian club, work with County Parks staff to care for the arboretum, provide a variety of recreational and educational opportunities, and carry out natural restoration projects.



*Volunteers build trail near the top of Mt. Pisgah*

Lowell Covered Bridge Interpretive Center



The latest addition to the Lane County Parks system, the restored Lowell Covered Bridge and Interpretive Center on U.S. Army Corps reservoir lands was dedicated in 2006. The center was made possible by the joint efforts of numerous public and private entities and individuals. The park includes several interpretive signs about covered bridges, area history and attractions. It has a waterside viewing promenade, covered seating area, and picnic tables. Future plans are to install a courtesy dock to be used as part of the Oregon Rowers Association's annual Covered Bridge Regatta on Dexter Lake.

Fall Creek (Unity)

Fall Creek Park is an 11-acre park on Jasper Lowell Road. The Fall Creek Neighborhood Association partners with Lane County to keep this park clean and welcoming. It includes picnic tables and grills, horseshoe pits, and riverfront.

**Table \*\*: Middle Fork Willamette Watershed Parks**

Park	Acres	% of Total
<b>Class B</b>		
Lowell Covered Bridge Center	1.6	
<b>Total, Class B</b>	<b>1.6</b>	<b>&lt; .1%</b>
<b>Class C</b>		
Fall Creek	11.3	
Mt. Pisgah	2,216.3	
<b>Total, Class C</b>	<b>2,227.6</b>	<b>&gt;99.9%</b>
<b>Total for Watershed</b>	<b>2,229.2</b>	<b>100%</b>

## UPPER WILLAMETTE

The southern extremity of the Upper (main stem) Willamette watershed falls just inside the northern boundary of Lane County. Two county parks, Whitely and Hileman Landings, provide access to the Willamette River.

Table \*\*: Upper Willamette Watershed Parks

Park	Acres	% of Total
<b>Class B</b>		
Whitely	1.4	3%
<b>Class D</b>		
Hileman	45.4	97%
<i>Total for Watershed</i>	<i>46.8</i>	<i>100%</i>

## COAST FORK WILLAMETTE WATERSHED



In all, there are eleven county parks totaling approximately 521 acres in this watershed. They offer access to Dorena Reservoir, Row River, and Mosby and Brice Creeks. Six of Lane County's 18 covered bridges are located in this watershed. Three are part of the Lane County Parks system. They are the Currin, Stewart, and Dorena bridges over Row River and Mosby Creek. All three are nationally designated historic landmarks.

*Currin Covered Bridge, built in 1925*

### Baker Bay

The U.S. Army Corps of Engineers leases hundreds of acres to Lane County for park use, including Baker Bay. The 80-acre park includes a campground, marina, swimming area, and acres of lawn and shade, including two large group facilities. The marina includes 26 slips, and there are 24 on-shore boat storage spaces. The concession sells food and watercraft rentals.



*Play structure at Baker Bay*

### Blue Mountain

The largest park in this watershed is 268-acre Blue Mountain. While it includes an older picnic shelter, the park is otherwise undeveloped. The park's forest is managed sustainably for timber, contributing significant revenues to Parks Division operations while continuing to offer a high quality, passive recreation experience.



*Post office replica at lower Bohemia Saddle Park*

### Bohemia Saddle Park

Bohemia Saddle rests at about 4,000 feet elevation in the saddle between Bohemia Mountain and Fairview Peak, along the ridgeline dividing the Willamette and Umpqua watersheds in the Calapooya Mountains, south of Cottage Grove. It is the most remote park in the Lane County system, requiring a four-wheel drive vehicle to get there. It is also perhaps the most intriguing, containing a briefly thriving, gold-rush-era ghost town.



The Applegate Trail through southern Oregon and the 1850 enactment of the Donation Land Claim Act brought hundreds of settlers to the southern Willamette Valley. Within twenty years, gold was discovered in the mountains in and near Bohemia Saddle. Bohemia City sprang up in approximately 1868, and for a brief time the remote settlement was alive with activity, even boasting a hotel. Today there is little evidence of its existence, but several active gold mining claims remain. One miner, Ray Nelson, donated a portion of his claim to Lane County in 1962, and it was designated as a public park in 1970. A reconstructed post office now sits at the bottom level of the park at the site of the old ghost town. A deactivated mine shaft is within the park's boundaries at the upper level.

The history and spectacular beauty of Bohemia Mountain country gave rise to ardent community interest and stewardship of the park. Members of the Bohemia Mine Owners Association and the Cottage Grove Goldiggers and Prospectors help patrol, assist visitors to the remote location, and take out trash as part of Lane County's Adopt-A-Park program. The miners hold an annual community pancake breakfast at the park during the Bohemia Mining Days festival in Cottage Grove.

Table \*\*: Coast Fork Willamette Watershed Parks

Park	Acres	% of Total
<b>Class A</b>		
Baker Bay <i>Total, Class A</i>	<i>80.4</i>	<i>15%</i>
<b>Class C</b>		
Blue Mountain	268.3	
Bohemia Saddle	12.4	
Currin Bridge	1.0	
Dorena Bridge	1.1	
LaSells Stewart	14.0	
Stewart Bridge	.1	
Wildwood Falls	3.4	
<i>Total, Class C</i>	<i>300.3</i>	<i>57%</i>
<b>Class D</b>		
Big River	38.3	
Cinderella	56.1	
Vaughn	48.6	
<i>Total, Class D</i>	<i>143.5</i>	<i>28%</i>
<i>Total for Watershed</i>	<i>524.2</i>	<i>100%</i>

## LONG TOM WATERSHED

Three of the parks at the Fern Ridge reservoir – Richardson, Orchard Point, and Perkins, are Class A parks. Besides offering a wide variety of recreational amenities, these parks are easily accessible and close to the Eugene-Springfield metropolitan area to the east, and Veneta and Elmira to the west. As a result, they are the most intensively used lands in the County parks system. All parks along Fern Ridge are on leased lands owned by the U.S. Army Corps of Engineers.



Richardson Park Day Use Area

### Richardson

At 115 acres, Richardson is the largest Class A park in the County Parks system. It is accessible by major roads in all directions, and is the closest RV campground to the cities of Eugene and Veneta. With 88 sites, a large day use area, and three picnic shelters, it is one of the most visited County parks. An 8,000 square-foot picnic shelter was completed in 2004. The three-roofed structure houses a full-service, outdoor kitchen and seats 300 people. Richardson has a 285-slip marina, a swimming area, play structures, game areas, and an outdoor amphitheater.



*Richardson Park's amenities include a 285-slip marina (above). The reservoir and surrounding marshlands (left) attract hundreds of bird species and other wildlife.*

### Orchard Point

Orchard Point, just east of Richardson on the north side of Fern Ridge reservoir, is 58 acres in size. Its day use facilities include two swimming areas, a 221-slip marina, play structures, and several group picnic facilities. There is a seasonal food concession, watercraft rentals, volleyball net and horseshoe pits.

### Perkins Peninsula

Perkins comprises 42 acres on the south side of Fern Ridge reservoir. With fewer facilities, it offers Class A service and a more tranquil alternative to the other reservoir parks. There is a boat launch and fishing pier, seasonal kayak and canoe rentals, and a small swimming area. A nature trail is along the park's western perimeter. To the east, adjacent to the park is a wildlife viewing and hunting area managed by the Oregon Department of Fish and Wildlife (ODFW). For three days in July, during the Oregon Country Fair that occurs annually near Veneta, Perkins offers camping and partners with Lane Transit District to provide free bus service to and from the fair.



*Perkins Peninsula*

### Zumwalt

Zumwalt is a 58-acre, Class C park. It is highly popular for walking, birding, and other passive recreation. The City of Veneta leases the park for a campground during the Oregon Country Fair.

Table \*\*: Long Tom Watershed Parks

Park	Acres	% of Total
<b>Class A</b>		
Richardson	114.8	
Orchard Point	57.7	
Perkins Peninsula	41.6	
<i>Total, Class A</i>	<i>214.1</i>	<i>71%</i>
<b>Class C</b>		
Zumwalt	58.0	20%
<b>Class D</b>		
Kinney	18.5	
Peaceful Valley	9.8	
<i>Total, Class D</i>	<i>28.3</i>	<i>9%</i>
<i>Total for Watershed</i>	<i>300.4</i>	<i>100%</i>

## SIUSLAW WATERSHED

The Siuslaw watershed includes 19 county parks totaling 805 acres, with diverse service levels and recreation opportunities. Included is an RV park, retreat center, river launches, lake and ocean access, and hundreds of undeveloped, natural acres reflecting a variety of vegetation and geography. There are two Class A parks here –Camp Lane near Walton, and Harbor Vista on the coast.

### Camp Lane

Camp Lane is a 16-acre historical site on Highway 126 West, 23 miles inland from the Pacific Ocean. The lodge was built by the Civilian Conservation Corp 60 years ago, and is now Lane County Park's only organizational retreat. Its huge stone fireplace, commercial kitchen, and wooded setting on the Siuslaw River make it a popular destination for service clubs, churches, youth organizations, and family reunions. A caretaker is on hand 24 hours a day, and cooking staff are available for hire. Camp Lane has a regulation sized, covered basketball court built by volunteers from the Kiwanis Club. The retreat also has an informal ballfield, volleyball, and a swimming hole on the river. Use of Camp Lane is by reservation only. In the 1950's, it became base camp for workers constructing the highway's Mapleton tunnel. Surrounded by national forest lands, Camp Lane has spontaneously served as a forest firefighting staging area on two occasions.



*Camp Lane lodge*

### Harbor Vista



Harbor Vista is a year-round 38-site RV and tent campground. Each site has water and electricity, and there is an RV dump station. The park overlooks the mouth of the Siuslaw River and the ocean. A viewing structure provides shelter during rainy weather. The park is also a popular day use area.

*View from Harbor Vista Park, looking out over the North Jetty on the Siuslaw River and beyond to the Pacific Ocean*

Other Siuslaw Watershed Parks

As the only park with public beach access in the area, Heceta Beach is popular among local residents. Further inland on Highway 36, Triangle Lake Park is the only public land on its shore. It has a boat ramp and dock, and is popular for swimming.

Eleven other parks in this watershed provide boat access to the Siuslaw River, Lake Creek, or Mercer Lake. Among these is Rock Dock, a popular fishing and crabbing dock on leased lands owned by the U.S. Army Corps of Engineers, near the mouth of the Siuslaw River.

Five parks, or 736 acres representing 91% of parklands in this watershed, are undeveloped. They include Clear Lake Dunes, Ocean Woods, Siuslaw Falls, South Beach, and Three Mile Prairie.

Recently, 84 acres of foreclosed property in the Glenada area was transferred to County Parks for revenue generation purposes. This land will be conveyed to Oregon Parks and Recreation in the near term, so it is not included in the county parklands inventory.



*Heceta Beach has picnic tables, parking, a bathroom, and public beach access*

**Table \*\*: Siuslaw Watershed Parks**

Park	Acres	% of Total
<b>Class A</b>		
Camp Lane	15.6	
Harbor Vista	14.2	
<b>Total, Class A</b>	<b>29.8</b>	<b>4%</b>
<b>Class B</b>		
Bender Landing	.5	
Heceta Beach	2.8	
Linslaw	26.9	
Triangle Lake	.6	
<b>Total, Class B</b>	<b>30.8</b>	<b>4%</b>
<b>Class C</b>		
Austa	.5	
Deadwood Landing	.5	
Farnham Landing	.7	
Mapleton Landing	1.8	

Park	Acres	% of Total
Mercer Lake	1.0	
Munsel Lake	1.8	
Rock Dock	.7	
Schindler	.3	
Tide	1.8	
<b>Total, Class C</b>	<b>9.1</b>	<b>1%</b>
<b>Class D</b>		
Clear Lake Dunes	156.3	
Ocean Woods	40.0	
Siuslaw Falls	78.9	
South Beach	299.8	
Three Mile Prairie	160.8	
<b>Total, Class D</b>	<b>735.8</b>	<b>91%</b>
<b>Total for Watershed</b>	<b>805.5</b>	<b>100%</b>

**SILTCOOS WATERSHED**

Two county parks in this watershed provide boat access to Siltcoos Lake.

Westlake

Westlake is a 1-acre fishing and boating destination on the southern edge of Dunes City. The Siltcoos Canoe Trail starts here and is a popular draw.



*Westlake*

## Ada

Ada is a 100-acre park remotely located on the east side of Siltcoos Lake. The park is forestland with a primitive boat launch. It has high-value wildlife habitat and offers excellent passive recreation opportunities.



Ada Park

Table \*\*: Siltcoos Watershed Parks

Park Site	Acres	% of Total
<b>Class B</b>		
Westlake	1.3	1%
<b>Class C</b>		
Ada	99.9	99%
<b>Total for Watershed</b>	<b>101.2</b>	<b>100%</b>

## Inventory Acreage Changes Since 1980

The county parklands inventory has changed significantly since the last County Parks & Open Space Master Plan was adopted in 1980. This is primarily due to land exchanges with other public land management agencies. Ninety percent of net parkland changes, or 1,171 acres that are no longer in the County Parks system, continue to be parks and open space in public ownership under the management of other agencies. Most of the transfers were cost saving and efficiency measures necessary as a result of the 1980's recession and a simultaneous loss of state gas tax funding. (Historical context is further discussed in Chapter \*\*.) Others were logical jurisdictional transfers, such as the conveyance of 375-acre Alton Baker Park to the City of Eugene. Twenty percent of net changes, or an increase of 300 acres, were from donations of land into the County Park system.

Other, mostly minor acreage corrections resulted from a recent, county-wide parcel mapping effort that used geographic information system technology to integrate county land survey data, property records, aerial photography, and computerized maps.

Table \*\* shows how the county parks inventory has changed from 1980 until now. Appendix \*\* shows changes on an individual park basis.

Table \*\*: Changes in Parkland Acreage, 1980-2005

Category of Change	Net Acreage Change	% of Change
State Exchanges	-313.8	24%
USACE Leased Acreage Changes	-152.9	12%
Other Agency Transfers	-703.9	53%
MRCMP Changes	4.7	-.4%
Private Land Acquired-Conveyed	299.7	-23%
Acreage Corrections	-455.5	34%
<b>Total Change in Acreage</b>	<b>-1,321.6</b>	<b>100%</b>

# County Park Resources

## ACCESS AND SIGNAGE

Access and signage issues concern a variety of features in County Parks. Parking, restroom facilities, camping facilities, docks, paths, and all other park facilities must be evaluated as to adequate access and signage, to make parks available for everyone to enjoy. No County parks currently have signs or tactical improvements for the vision impaired. Spanish language signs were recently installed at all fee areas. Chapter \*\* addresses access and signage needs, while chapter \*\* includes recommendations and priorities with regard to these needs.

All Class A parks with the exception of Camp Lane have parking, restrooms and showers meeting Americans with Disabilities Act (ADA) requirements. Several other parks also have ADA parking, restroom facilities, and docks. Table \*\* shows ADA facilities within all parks. All future development in county Parks will meet ADA requirements.

Table \*\*: Parks with ADA-Compliant Facilities

Park	ADA Facilities				
	Restrooms	Parking	Showers	Camp Sites	Fishing Platform, Dock, Other
Ada	x				
Armitage	x	x			
Baker Bay	x	x	x		
Ben & Kay Dorris		x			
Bender Landing	x	x			fishing platform
Blue Mountain	x (seasonal)				
Clover (Rosboro)	x				
Dorena Covered Bridge		x			
Fall Creek (Unity)	x				
Harbor Vista	x		x	x	
Hendricks Bridge	x	x			
Jennie B. Harris		x			
Linslaw Landing	x	x			
Lowell Covered Bridge Interp. Cntr.	x	x			all facilities
Munsel Lake	x	x			dock
Old McKenzie Trout Hatchery	x	x			
Orchard Point	x	x			
Perkins Peninsula	x	x			
Richardson	x	x	x	x	
Rodakowski Landing		x			
Triangle Lake		x			docks
Westlake	x	x			dock
Zumwalt	x				

## CAMPING AND OTHER OVERNIGHT ACCOMMODATIONS

There are overnight facilities at Richardson, Baker Bay, Harbor Vista, and Camp Lane, in the Long Tom, Coast Fork Willamette, and Siuslaw watersheds, respectively. Richardson and Harbor Vista have full hook-ups, while Baker Bay accommodates trailer and tent camping. Camp Lane has dormitories, adirondacks, and other buildings providing overnight sleeping facilities for group retreats.

Three parks provide temporary camping for group events. At Howard Buford Recreation Area (HBRA), group camping is allowed on a reservation basis. At Perkins and Zumwalt, camping is currently limited to the 3-day Oregon Country Fair weekend. Table \*\* summarizes camping facilities in Lane County Parks.



Lane County's Harbor Vista Campground on the Oregon coast is open year round.

Table \*\*: Lane County Parks Overnight Facilities – Number of Sites\*

	RV Sites (full hook- ups)	Tent & Trailer Sites	Group Sites	Special Event Group Sites
<b>Long Tom</b>				
Richardson	88			
Perkins*				1 -275 capacity
Zumwalt*				1 -300 capacity
<b>Coast Fork Willamette</b>				
Baker Bay		49	2 -8 capacity each	
<b>Siuslaw</b>				
Harbor Vista	38	**		
Camp Lane retreat facilities			1 -160 capacity	
<b>Middle Fork</b>				
HBRA				1-700 capacity
<i>Totals</i>	<i>126</i>	<i>49</i>	<i>3</i>	<i>3</i>

\*Camping facilities at Perkins and Zumwalt are currently also available for 3 nights each July, during the Oregon Country Fair in Veneta

## CULTURAL AND HISTORIC RESOURCES

Lane County's Parks include several historic landmarks, sites, or cultural points of interest, including:

- three nationally designated historic covered bridges
- the nationally designated historic McKenzie Trout Hatchery
- Camp Lane's 60-year old lodge, constructed by the Civilian Conservation Corp
- the Kienzle-Seavey homestead house and barn at Howard Buford Recreation Area
- the Bohemia gold mining area and ghost town, at Bohemia Saddle
- Helfrich Landing includes an interpretive sign about historic use of the McKenzie River
- Hendricks Bridge includes an interpretive sign about the 1880's era



Applegate Trail Interpretive sign at Zumwalt Park

- Hendricks Ferry, and the former covered bridge at this location
- The Lowell Covered Bridge Interpretive Center, and the Currin, Dorena, and Stewart historic covered bridges
- Richardson and Zumwalt Parks are located in the historic path of the Applegate Trail. Interpretive signs describe the route from Idaho to the Oregon Territory and tell the tale of how it came about.

Numerous indigenous tribes existed throughout Lane County. In particular, the Kalapuya people, comprising eight tribes, inhabited the Willamette Valley before homesteaders arrived. They may have frequented the prairie lands at Howard Buford Recreation Area, and are known to have lived seasonally in the Calapooya Mountains where Bohemia Saddle Park is located.

## EQUESTRIAN FACILITIES

Howard Buford Recreation Area is the only county park that has equestrian facilities. The HBRA trail system provides approximately 11 miles of trails accessible to horses. An outdoor horse arena is at the north end of the park.

## PICNIC ACCOMMODATIONS

### Large Group Accommodations

Armitage, Hendricks, Baker Bay, Orchard Point, and Richardson have full service, group picnic facilities available by reservation. Facilities include running water and electricity, picnic tables, serving tables, grills, and in some cases electrical burners and covered shelters. These and other parks also have several picnic tables and grills throughout the grounds, available on a first come, first served basis.

Table \*\* summarizes group facilities currently available by reservation in county parks, and other parks that have both picnic tables and barbeque grills.

Table \*\*: Picnic Accommodations

Park	Class	Reserved Areas				Unreserved Areas		Drinking Water	Concession
		# of Group Areas	Capacity (each)	Cooking Facilities	Electrical outlets	Grills*	Tables*		
<b>McKenzie</b>									
Armitage	A	8	50-200	Grills, covered areas with sinks, running water, serving areas	yes	9	10	yes	
Ben & Kay Dorris	B					3	13	yes	
Deerhorn	B					1	6		
Hendricks Bridge	A	1	40-50	shelter, grill, sink & running water, serving area	yes	7	27	yes	
Howard J. Morton							1		
Jennie B. Harris	B					5	6		
Old McKenzie Trout Hatchery	C						2		
(continued)									



Park	Class	Reserved Areas				Unreserved Areas		Drinking Water	Concession
		# of Group Areas	Capacity (each)	Cooking Facilities	Electrical outlets	Grills*	Tables*		
<b>Middle Fork Willamette</b>									
Fall Creek	C					1	9		
Howard Buford RA	C						8	yes	
<b>Upper Willamette</b>									
Whitely	B						1		
<b>Coast Fork Willamette</b>									
Baker Bay	A	2	70-100	grills, serving areas	yes		40	yes	1
Wildwood Falls	C						3		
<b>Long Tom</b>									
Orchard Point	A	4	150	grills, covered areas with sink & running water, serving area	yes	14	30	yes	1
Perkins	A					13	71		
Richardson	A	3	150-300	Shelters, burners, grills, sinks & running water, serving areas	yes	5	25	yes	
Zumwalt	C						6		
<b>Siuslaw</b>									
Bender	B					1	3		
Harbor Vista	A					4	4	yes	
Heceta Beach	B						2	yes	
Linslaw	B						5	yes	
Deadwood	C						1		
Farnham	C						2		
Schindler	C						2		
Tide	C						5		
Siuslaw Falls	D					1	1		
<b>Siltcoos</b>									
Ada	C						4		
Westlake	B					1	3		
<b>Totals</b>		<b>18</b>	<b>---</b>	<b>---</b>	<b>---</b>	<b>65</b>	<b>290</b>	<b>---</b>	<b>2</b>

\* Actual number of tables and grills in a park may vary because of relocation, vandalism, or breakage

## PLAYFIELDS, COURTS, AND PLAY STRUCTURES

Play facilities are at all Class A county parks, and some of the other parks. Table \*\* provides a summary. All play facilities at county parks are adequate for informal family, neighborhood or group play. Camp Lane has a standard size, covered basketball (multi-use) court.

*The Les Calder multi-use covered athletic court at Camp Lane was designed and built by Kiwanis Club volunteers*



Table \*\*: Playfields, Courts, and Play Structures in Lane County Parks

	Informal Ball Field	Volleyball Net	Horseshoe Pits	Basketball Hoops	Play Structure	Swings	Lawn or mowed field
<b>McKenzie</b>							
Armitage		x	x				x
Hendricks Bridge		x	x				x
Deerhorn				x		x	x
<b>Middle Fork Willamette</b>							
Fall Creek (Unity)			x				x
<b>Long Tom</b>							
Orchard Point		x	x		x	x	x
Peaceful Valley	x						
Perkins Peninsula	x	x	x				x
Richardson		x	x		x	x	x
<b>Coast Fork Willamette</b>							
Baker Bay		x			x		x
<b>Siuslaw</b>							
Camp Lane	x	x		x (court)			x
Harbor Vista						x	x
<i>Totals</i>	<i>3</i>	<i>7</i>	<i>6</i>	<i>2</i>	<i>3</i>	<i>4</i>	<i>10</i>

## RESTROOM FACILITIES

Toilet facilities include full service restrooms with flush, vault, and portable toilets. Flush toilets have sinks and soap. Vault toilets are either "CXT" or older vault toilets, both of which are cement block structures with no sinks. CXT structures are more durable, aerated, and more easily maintained than the older vault type toilets. Fern Ridge Parks provide floating restroom facilities during boating season, as does Westlake Park on Siltcoos Lake.

Table \*\* summarizes restroom facilities. Note that two county parks have RV dump stations – Richardson and Harbor Vista, that are not included in this table.

Table \*\*: Number of County Parks and Restroom Facilities

	Flush	Vault	Portable*	None (%)	Totals
McKenzie	3	8	13	5 (17)	29
Middle Fork Willamette	1		2	(0)	3
Upper Willamette		1		1 (50)	2
Coast Fork	1	1	2	7 (64)	11
Long Tom	3		1	2 (33)	6
Siuslaw	4	7	5	4 (20)	20
Siltcoos		1	1	(0)	2
<i>Totals</i>	<i>12</i>	<i>18</i>	<i>24</i>	<i>19 (26)</i>	<i>73</i>

\*Restrooms at some locations are seasonal based upon use

## WATER RECREATION FACILITIES

Most county parks provide water access, including boating, fishing, and swimming facilities. All navigable waterways are subject to state boating regulations, which restrict motorized boats on some river segments.

Fishing is subject to state regulations and licensing requirements. Any accessible water body provides opportunities for fishing provided state licensing and other requirements are met.

Table \*\* summarizes boating access and number of parks with (unsupervised) swimming areas in county owned and maintained parks.

**Table \*\*: Number of County Parks with Boating and Swimming Facilities**

	River Access	Lake Access	
	Boating Access	Boating Access	Swimming Access
McKenzie	20	1	1
Middle Fork Willamette			
Upper Willamette	2		
Coast Fork Willamette		1	2
Long Tom		3	4
Siuslaw	8	3	4
Siltcoos		2	1
<i>Totals</i>	<i>30</i>	<i>10</i>	<i>12</i>

## TRAILS

Howard Buford Recreation Area contains the most extensive system of hiking trails of any Lane County park, with more than 16 miles of maintained trails around Mt. Pisgah. Eleven miles are open for equestrian use. Its trail system connects with the Eugene to Pacific Crest Trail that continues on to the Ridgeline Trail in Eugene. Other trails in County parks are typically easy, level nature paths along the river or lakeshore. At the Crilly Nature Trail in Armitage Park, visitors can pick up a self-guiding botanical brochure. Vickery and Kinney Parks have buttes with trails to the top. Four parks currently provide access to water trails.

Table \*\* shows all parks with trails or paths. Blue Mountain's logging road is also included because it is often used for walking.

**Table \*\*: Parks with Trails and Paths**

Watershed	Description
<b>McKenzie</b>	
Armitage	Easy self-guided nature trail
Hendricks Bridge	Easy nature trail
Ben & Kay Dorris	Asphalt nature path
Deerhorn	Easy nature trail
Jennie B. Harris	Asphalt nature path
Old McKenzie Trout Hatchery	Walking paths
EWEB Bike Path	Bike path
Howard J. Morton	Easy nature trail
Vickery Butte	Moderate trail to top of butte
(continued)	
<b>Middle Fork Willamette</b>	
Howard Buford Recreation Area	16 miles of butte trails
Lowell Cov.Bridge Interp. Center	Paved promenade
<b>Upper Willamette</b>	
Hileman and Whitely Landings	Willamette Water Trail
(continued)	

Watershed	Description
<b>Coast Fork</b>	
Blue Mountain	Logging road
<b>Long Tom</b>	
Perkins Peninsula	Walking paths, nature trail
Kinney Butte	Primitive trail to top of butte
<b>Siuslaw</b>	
Bender Landing	Siuslaw Estuary Trail
Camp Lane	Walking paths
Heceta Beach	Beach access
<b>Siltcoos</b>	---
Westlake	Siltcoos Water Trail

## OPERATIONS, PROGRAMS AND EVENTS

Lane County Parks is a division of the Public Works Department. Operations include customer service and reservations; community outreach and volunteer coordination; parks patrol; routine maintenance and operations; rules enforcement; and fee collection.

Parks management focuses on ensuring facilities are maintained and operating to maximize the recreational experience. In addition to customer service, routine operations include cleaning as the highest priority, and irrigation of some areas within Class A parks. Facilities upkeep includes campgrounds, marinas, game equipment, bathrooms and septic systems, lawns, trees and other landscaping, and road and other infrastructure maintenance.

Caretakers, campground hosts, concessionaires, part time seasonal help, and hundreds of volunteers are also part of the Parks "family" performing a wide spectrum of park-related services. Several volunteer organizations have a variety of programs that promote education about natural resources, outdoor recreation and safety, and park protocol. Volunteer efforts and nonprofit organizations who use and take care of Lane County Parks are discussed in Chapter \*\*.

Park visitors can obtain special use permits for carrying out activities and events. Examples of requests that County Parks has accommodated in the past are pony rides, a trampoline, parachuting, a "shotgun wedding" and horse drawn carriages.

A major part of the daily routine is devoted to providing general information, and assisting park visitors in times of unexpected need such as finding lost children. Parks field staff are often the first responders in emergency situations. An all too frequent duty is responding to acts of vandalism.

### Fern Ridge Reservoir Programs

At Richardson Park each summer, the Parks Division Junior Rangers program educates youth on basic outdoor skills, safety, and park etiquette. The program provides information about campfire and water safety, campground etiquette, and basic plant identification. Children are "deputized" after completing the program and receive badges and other prizes. County Parks also sponsors an annual Fourth of July children's parade.

Every Friday and Saturday during the summer season, the amphitheater at Richardson hosts free movies and sometimes educational events that attract campers and surrounding residents. Children's movies are the most popular, and speaker topics have included raptors, birds, geology, water safety, and wildfire. The U.S. Army Corps of Engineers also sponsors educational events about the reservoir's natural features, dam, and other topics.