



SHERIFF'S OFFICE OVERVIEW

1

Mission: 'To Conserve the Peace'

*The Sheriff's Office is committed to Justice and Integrity,
Sworn to Protect Lane County, and Honored to Serve.*

DIVISIONS OF THE SHERIFF'S OFFICE

- OFFICE OF THE SHERIFF 2.0 FTE
- OPERATIONS SUPPORT DIVISION 47.0 FTE
- POLICE SERVICES DIVISION 82.0 FTE
- CORRECTIONS DIVISION 186.0 FTE



Duties of Lane County Sheriff

2

- ▶ COUNTY JAIL
- ▶ LAW ENFORCEMENT/POLICE PROTECTION
- ▶ CIVIL PROCESS SERVICE/ENFORCEMENT
- ▶ COURT/JUDICIAL SECURITY
- ▶ SEARCH & RESCUE (SAR)
- ▶ CONCEALED HANDGUN LICENSING (CHL)
- ▶ OFFICE IN COURTHOUSE



FY 24-25 BUDGET DETAILS

3

24-25 RESOURCES

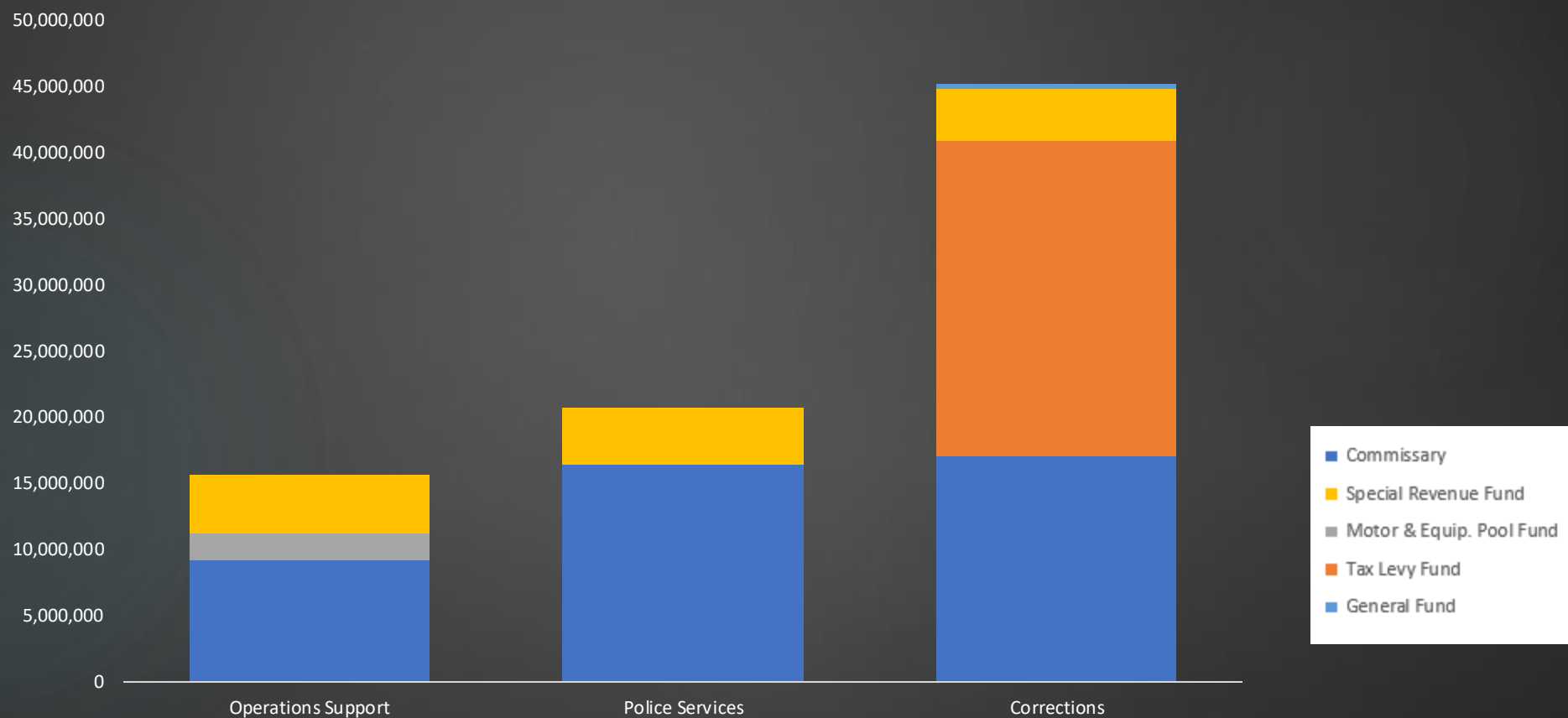
- General Fund
- Public Safety Levy
- Police Services Contracts
 - Cities of Creswell & Veneta
 - Oregon State Parks & Marine Board
 - Bureau of Land Management
 - Private Timber
- Grants
- American Rescue Protection Act (ARPA)
- Dispatch Contracts
 - Oakridge PD, Coburg PD, Junction City PD, LCC, Parole & Probation, Youth Services
- Jail Contract with City of Eugene
- Community Corrections Act (CCA)



FY 24-25 BUDGET DETAILS

4

Proposed Budget by Division and Fund
Fiscal Year 2024-2025

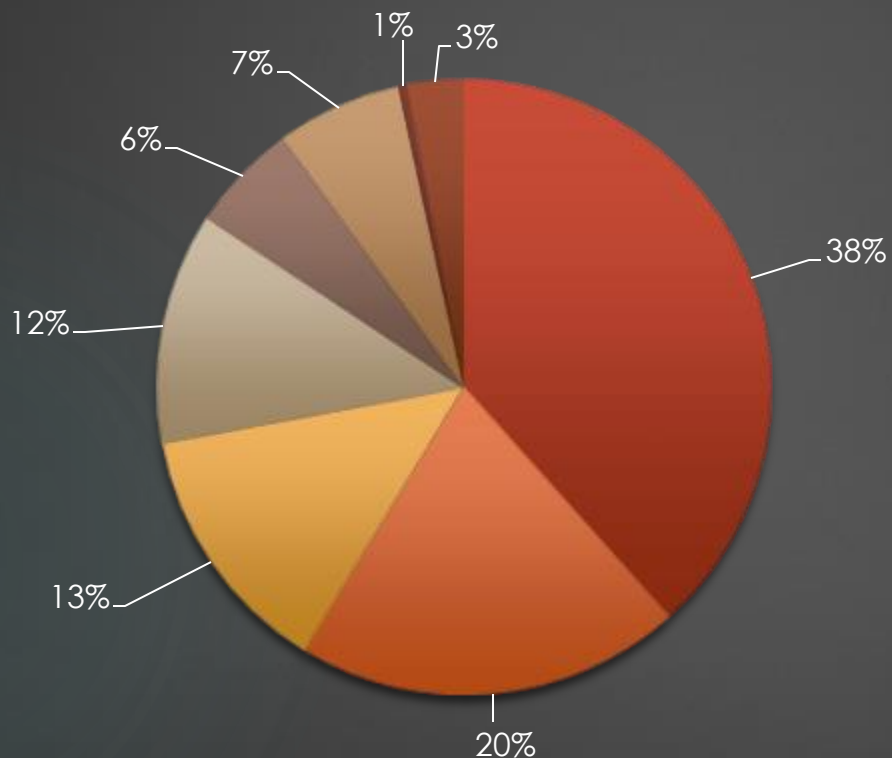




FY 24-25 BUDGET DETAILS

5

Operations Support Division



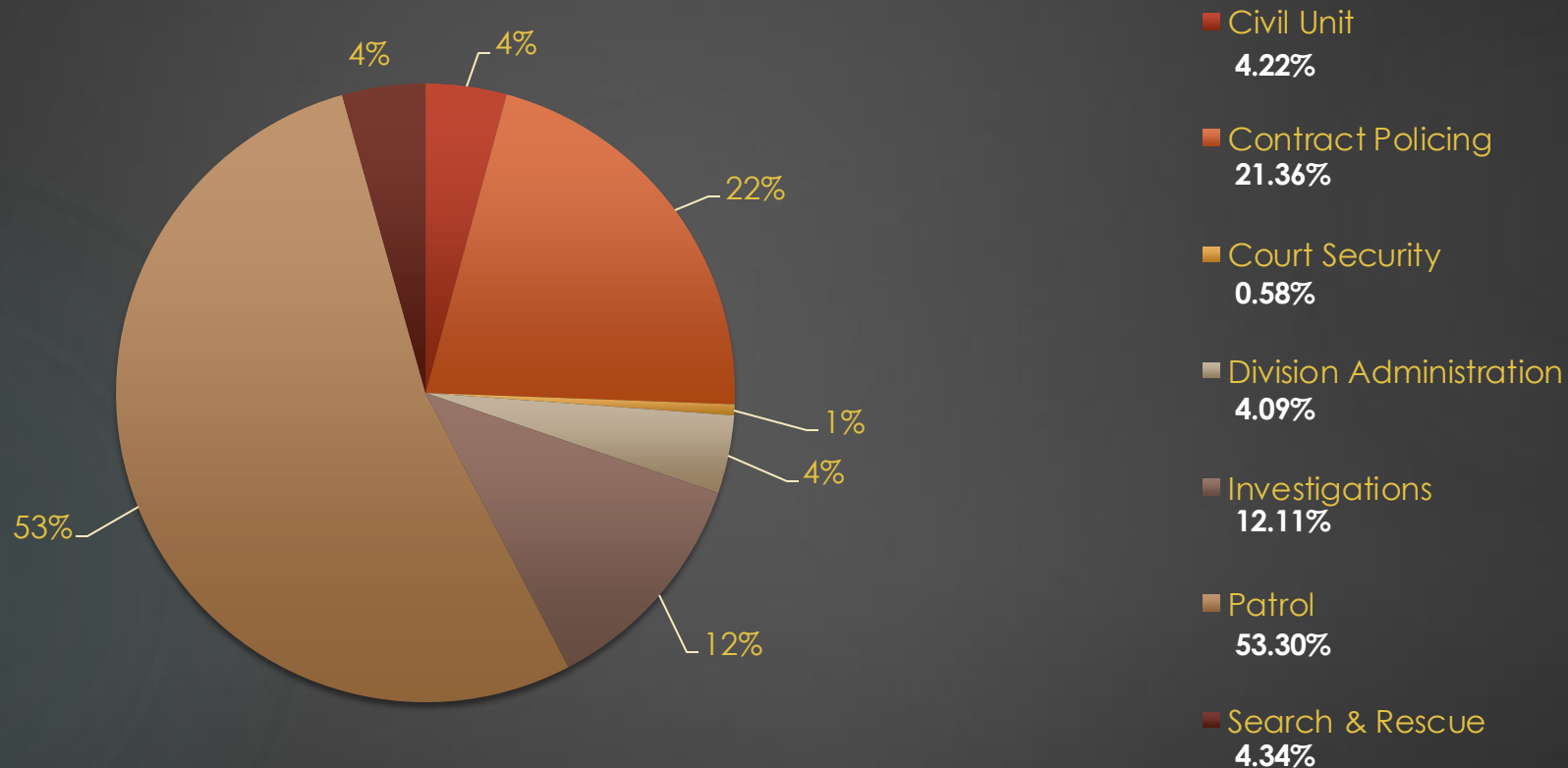
- Support Services
38.38%
- Communications Network
20.32%
- Emergency Response Planning
13.39%
- Division Administration
12.20%
- Fiscal
5.73%
- Fleet
6.57%
- Human Resources
0.48%
- Technology
2.93%



FY 24-25 BUDGET DETAILS

6

Police Services Division

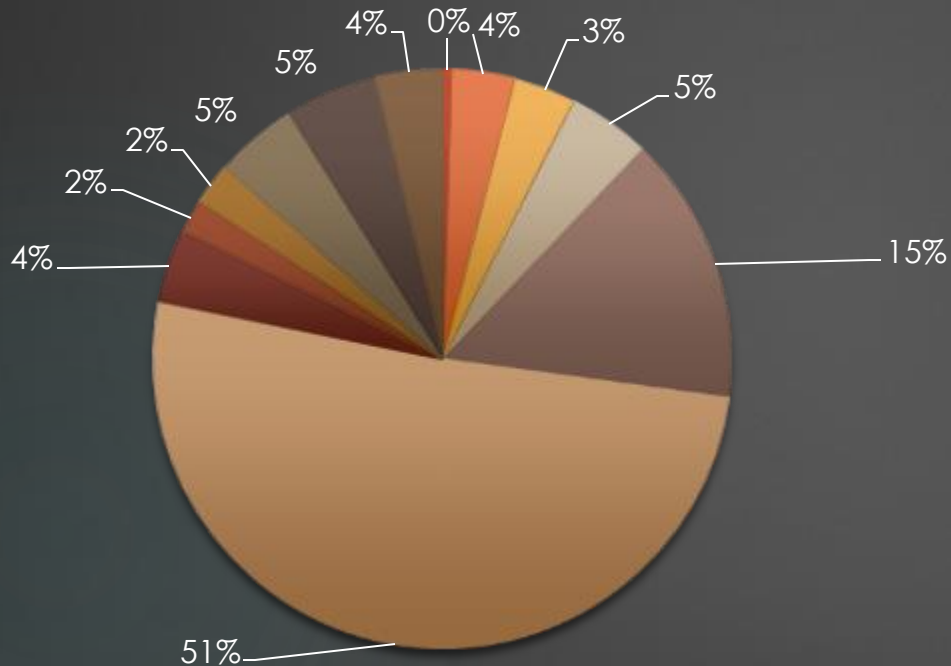




FY 24-25 BUDGET DETAILS

7

Corrections Division



Community Service
0.51%

Facility Maintenance
3.44%

AIC Health Services
14.98%

Offender Mgmt./Inmate Prog.
4.04%

Sheriff's Work Crew
2.34%

Transport
5.21%

Division Administration
3.55%

AIC Food & Laundry Services
4.65%

Jail Security
51.03%

EMP
1.89%

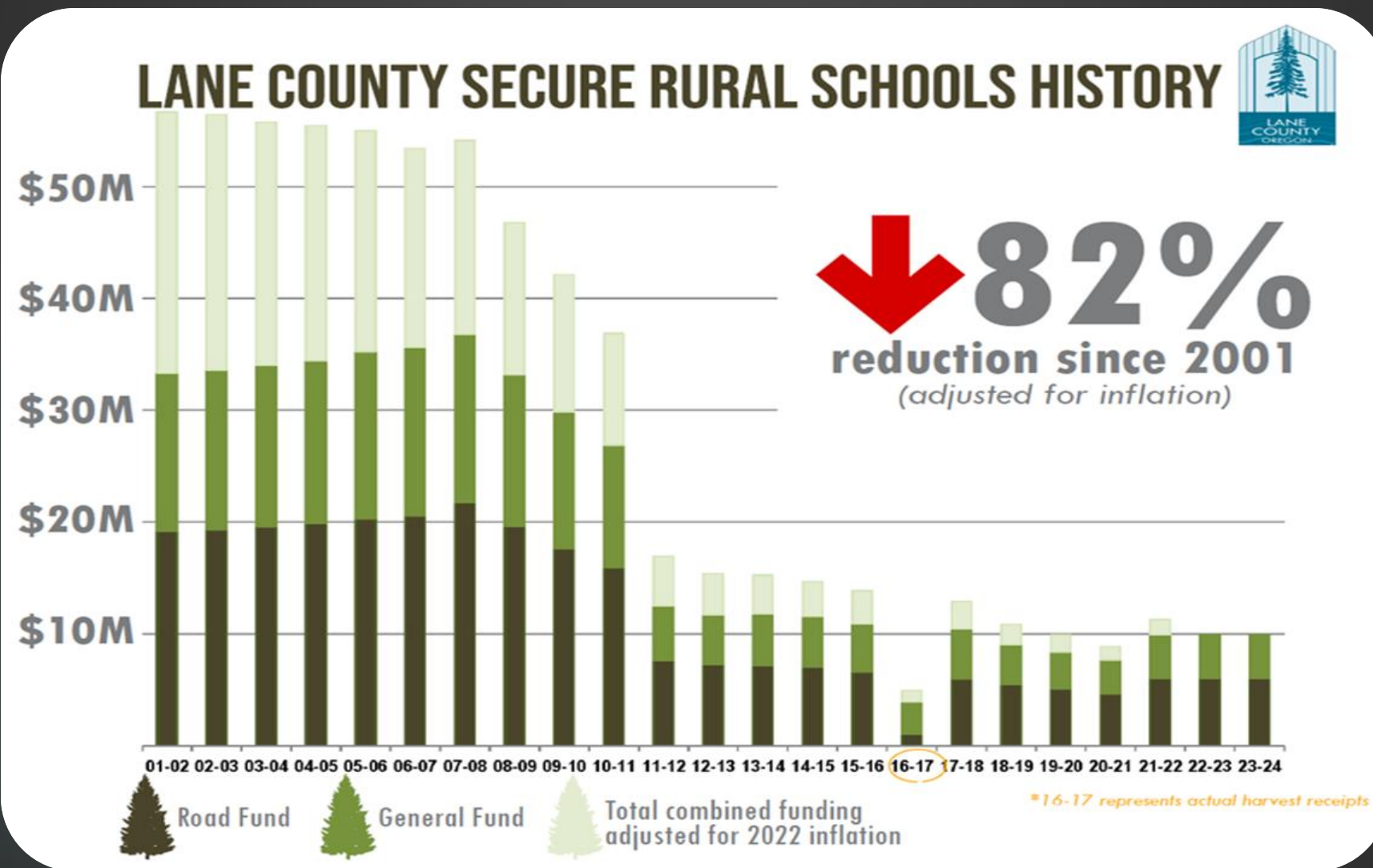
Corrections Records
4.66%

Treatment & Transition
3.69%

The Funding Emergency

8

Lane County Sheriff's Office



2008-2012

- Budget cuts eliminated 200 FTE positions from Sheriff's Office
- Laid off 100 S.O. employees
- Reduced Lane County Jail to only 125 local jail beds.

*A county the size and population of Lane County, operating the pre-trial and sentenced offender programs that we currently have, should have 526 jail beds.¹



¹ DLR Group, American Correctional Association Standards Review (2021)

Capacity Based Releases

10

2012

- Pre-trial Measure 11: 27
- Pre-trial violent felony: 83
- Total: 4,284

2013

- Pre-trial Measure 11: 21
- Pre-trial violent felony: 123
- Total: 3,678

2014

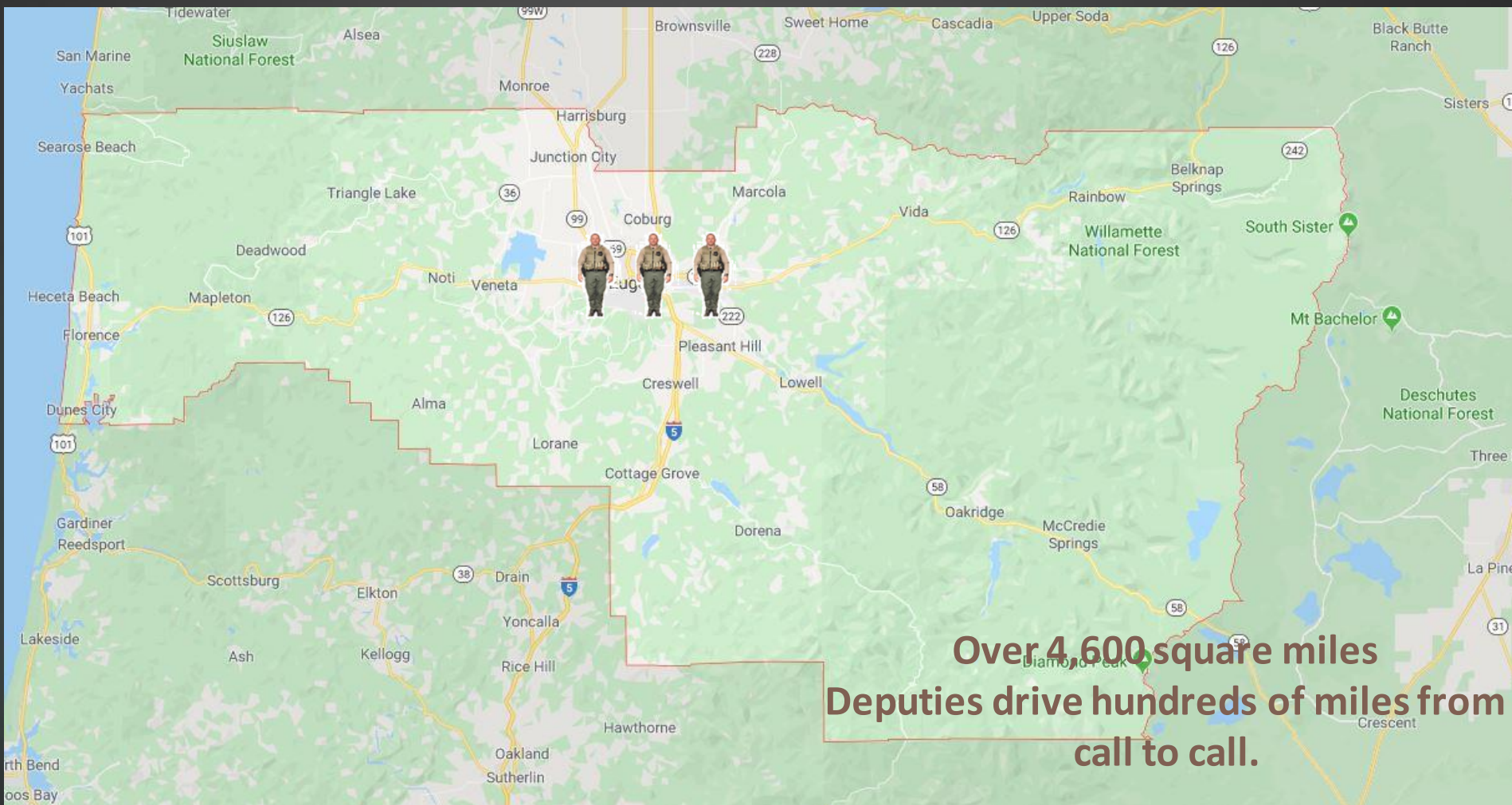
- Pre-trial Measure 11: **ZERO**
- Pre-trial violent felony: **ZERO**
- Total: 1,360





► The Lane County Sheriff's Office is the primary 9-1-1 response for over 117,000 people in Lane County, from the coast to the mountains.

11





LANE COUNTY vs STATEWIDE DEPUTY SHERIFF'S PER 1000 PEOPLE

Lane County Sheriff's Office

Select a Year

- ☐ 2021
☒ 2022

Lane County Population & Deputies

392,349

Population

73

Enforcement Deputies

0.19

Deputies per 1000

Statewide Average Population & Deputies

Based on OSSA Sheriff's Survey

117,238.94

Avg. Population

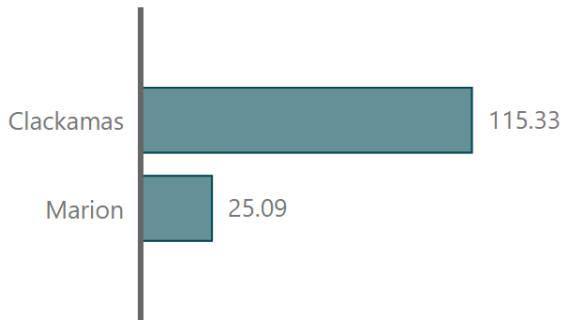
43.72

Avg. # of Enforcement Deputies

0.37

Deputies per 1000

Number of additional deputies needed to match the two closest comparable counties.



141.25

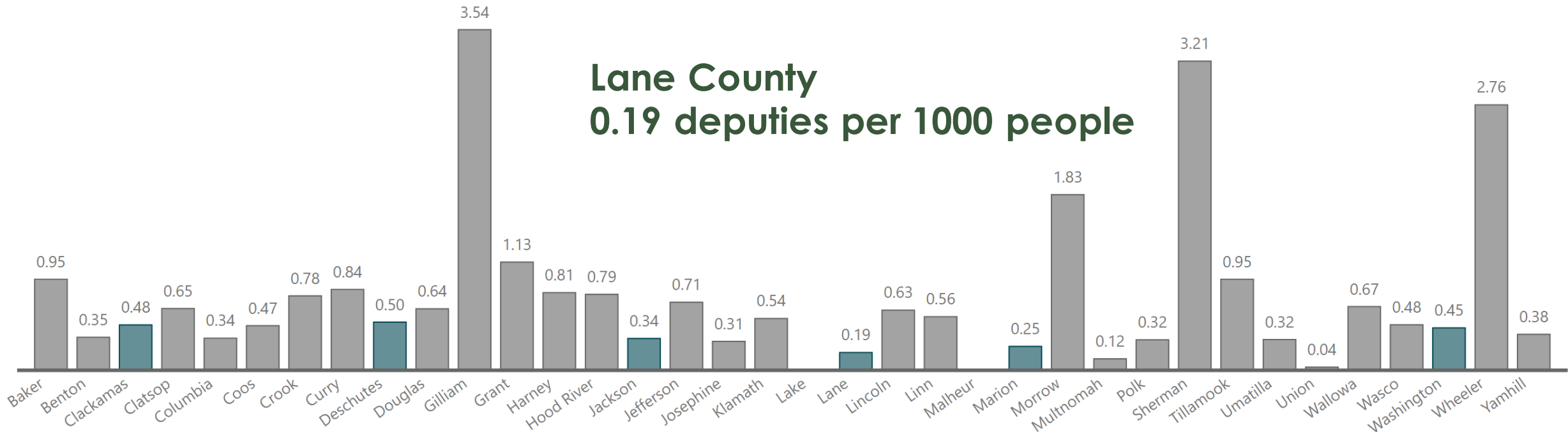
Total Enforcement Deputies needed to match state average per 1000.

68.25

Additional Enforcement Deputies needed to match state average.

Oregon Deputy Sheriff's per 1000 People by County

Based on OSSA Sheriff's Survey





POLICE SERVICES DIVISION

FUTURE CHALLENGES & OPPORTUNITIES

13

- Four district deputy positions only funded through June 2025.
- Eight additional patrol/detective positions with funding expected to run out partially through FY28.

Elimination of these 12 positions, would result in a reduction of our patrol staff by 16%.

(dropping down to .16 deputies/1000)



Where Your Property Tax Dollar Goes

14



11¢

county



47¢

school districts



32¢

cities



6¢

libraries, parks,
water districts, etc.



4¢

fire
districts

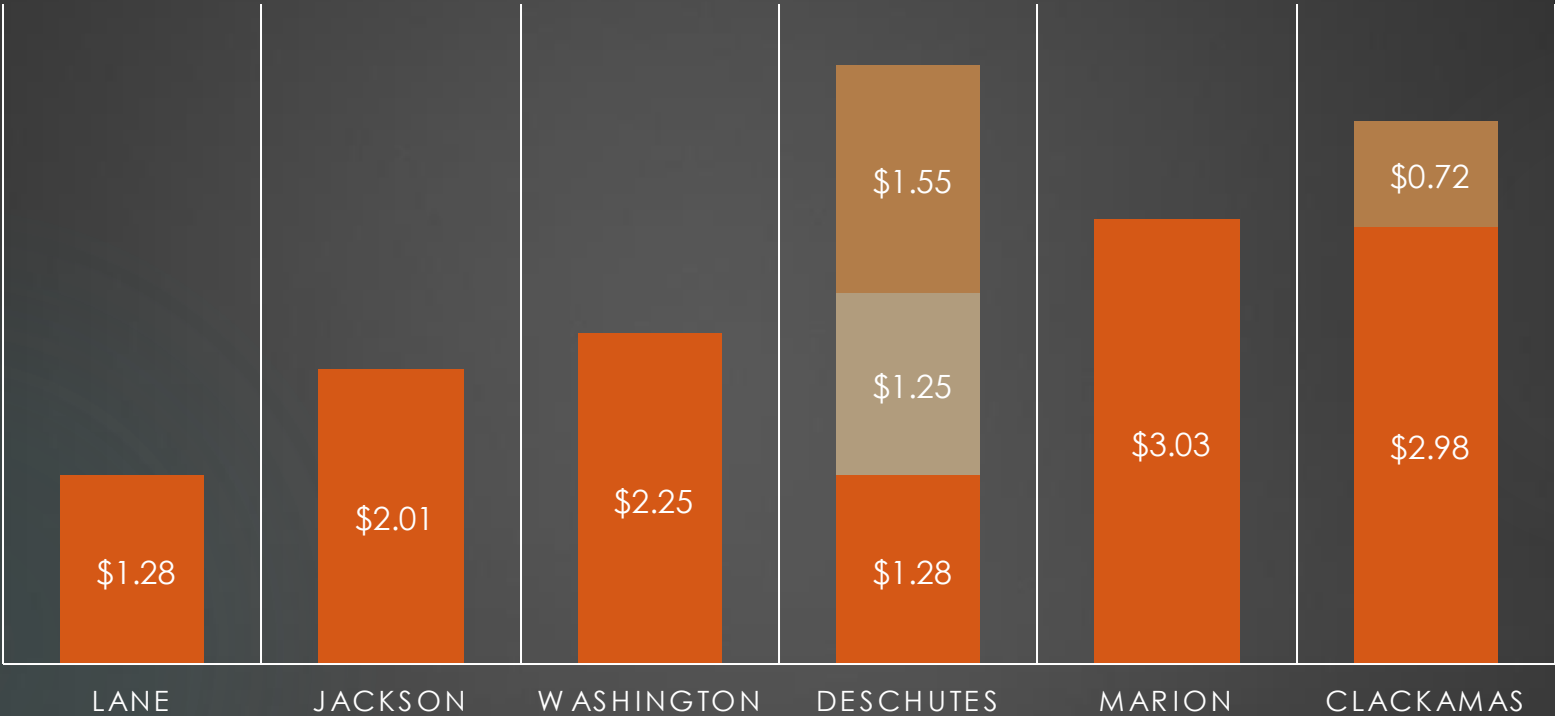
- Lane County's General Fund receives approximately 11¢ of every property tax dollar paid.

- Lane County has the seventh lowest permanent tax rate of Oregon's 36 counties.



Lane County In Context

PERMANENT TAX RATES COMPARABLE COUNTIES



Permanent Public Safety District Rates:

Deschutes County: Countywide \$1.25 Rural \$1.55

Clackamas County: \$0.72 (Enhanced Law) Has split regular rate \$2.41 City v. \$2.98